

Butte County ACEs Coalition exists to support and expand community-wide policies and practices that promote resiliency and address the impact of childhood trauma across all generations

Vision: All Butte County residents are empowered to break the cycle of **Adverse Childhood Experiences** through equal access to prevention and treatment services.

Values:

- Community awareness of Adverse Childhood Experiences (ACEs)
- Effective community-wide communication and collaboration
- Scientific and evidence-based approaches
- A multi-generational approach to healing families dealing with toxic stress
- Access and equity for all Butte County residents

Butte County ACEs Coalition:

- Provides opportunities for community members to network and learn.
- Educates people in Butte County about ACEs and the effects of toxic stress, by creating materials and providing ACEs 101 trainings, hosting screenings of ACEs documentaries, and engaging with the news media to promote awareness.
- Actively supports the implementation of trauma-informed practices that increase resilience and wellness for all residents, through peer led workforce trainings on the impact of ACEs and introducing trauma informed awareness.
- Conducts research to gain local data about ACEs awareness.
- We recognize the mental and emotional impact on those who provide services to communities that experience high ACE scores. We seek to create a supportive environment that promotes self-care and resilience building for our members.

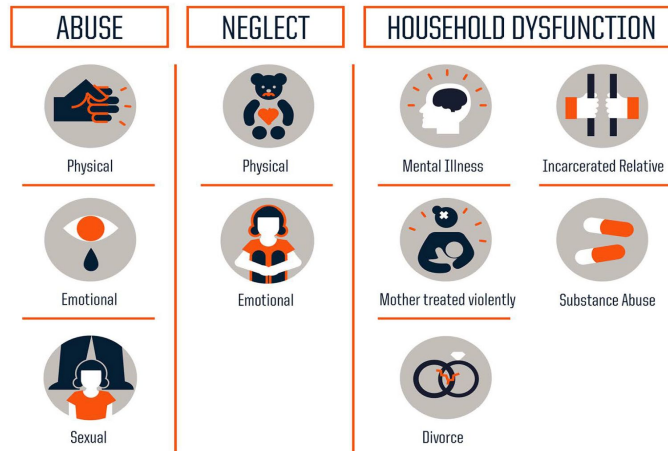
EARLY RESULTS:

- Chico Unified School District and Chico Country Day school boards have adopted a resolution declaring **November “ACEs awareness month.”**
- Paradise Unified School District is **engaging in intensive training with classified staff** about the impact of ACEs and helping staff understand student’s experiences.
- Butte County Office of Education is **providing ACEs education to all employees.**
- Butte County **Public Health, Behavioral Health, Department of Employment and Social Services, Juvenile Probation, Butte County Office of Education, Northern Valley Catholic Social Services and the Boys and Girls Club of the North Valley** have appointed staff to **incorporate trauma informed training to their workforce.**

MEMBERS: We are a coalition of community members representing early childhood, family services, recovery, K-12 education, health care, mental health, juvenile justice, government, business, libraries, higher education and other community-serving organizations. We strive to create a more resilient Butte County by educating individuals, communities and organizations about ACEs, trauma and resilience and providing training and resources for making policy and practice changes that are needed to create healing in our citizenry, organizations and systems.

ACEs FACTS FOR BUTTE COUNTY ADULTS: 76.5 percent of Butte County residents have experienced childhood adversity. Thirty percent reported at least four ACEs, ranking **Butte County the highest in the state for the most dangerous dose of ACEs**, and 1 in 3 adults surveyed said they had experienced two or three ACEs.*

WHY ACEs MATTER: Adverse childhood experiences, or ACEs, are **traumatic experiences that affect brain development in youth under the age of 18**, such as abuse, neglect, substance abuse or mental abuse in the household, domestic violence, or having a parent in prison, for example.



Source: Centers for Disease Control and Prevention
Credit: Robert Wood Johnson Foundation

The more **types of trauma** people experience, the more severe the consequences. Compared to someone who did not experience any childhood adversity, for example, a **person who has experienced four ACEs is 12x more likely to attempt suicide, 7x more likely to become an alcoholic, and twice as likely to have heart disease or cancer.** People with high ACE scores are more likely to struggle with depression and autoimmune diseases. These effects and others have **major consequences in our schools, criminal justice system, our economic vitality, and public health.**

WHAT BUTTE COUNTY ACES COALITION IS DOING ABOUT ACEs:

- Providing an opportunity for community members to network, support and learn from each other
- Educating people in Butte County about ACEs and the effects of toxic stress
- Actively supporting the implementation of trauma-informed practices that increase resilience and wellness for all residents

LEARN MORE AND GET INVOLVED:

JOIN US at our Bi-Monthly Meetings:

Check our calendar on <http://www.acesconnection.com/g/butte-county-ca-aces-connection>

Or contact abauer@buttecounty.net for more information

Learn more: ACEsConnection.com, ACEsTooHigh.com, CA Campaign to Counter Child Adversity www.4cakids.org

* Center for Youth Wellness (n.d.). *A Hidden Crisis: Findings on Adverse Childhood Experiences in California*