

BUILDING COMMUNITY RESILIENCE IN

ACEs are an American health problem.

Adverse Childhood Experiences (ACEs)

% children with 2+ ACEs:

21.7%

Nationally

Adverse Community Environments (ACEs) include:

- ✓ Poor housing quality & affordability
- ✓ Violence
- ✓ Discrimination
- ✓ Lack of opportunity & economic mobility

Together, these are the "Pair of ACEs".
How do they show up?

% children 0-17 who...

...have experienced **economic hardship**

...witnessed **domestic violence**

...lived with an adult with **mental illness**

Adverse Childhood Experiences

...whose guardian **abuses substances**

...had a **parent in jail**

Adverse Community Environments

Rate of **violent crimes** (per 100,000 ppl)

% children living in **poverty**

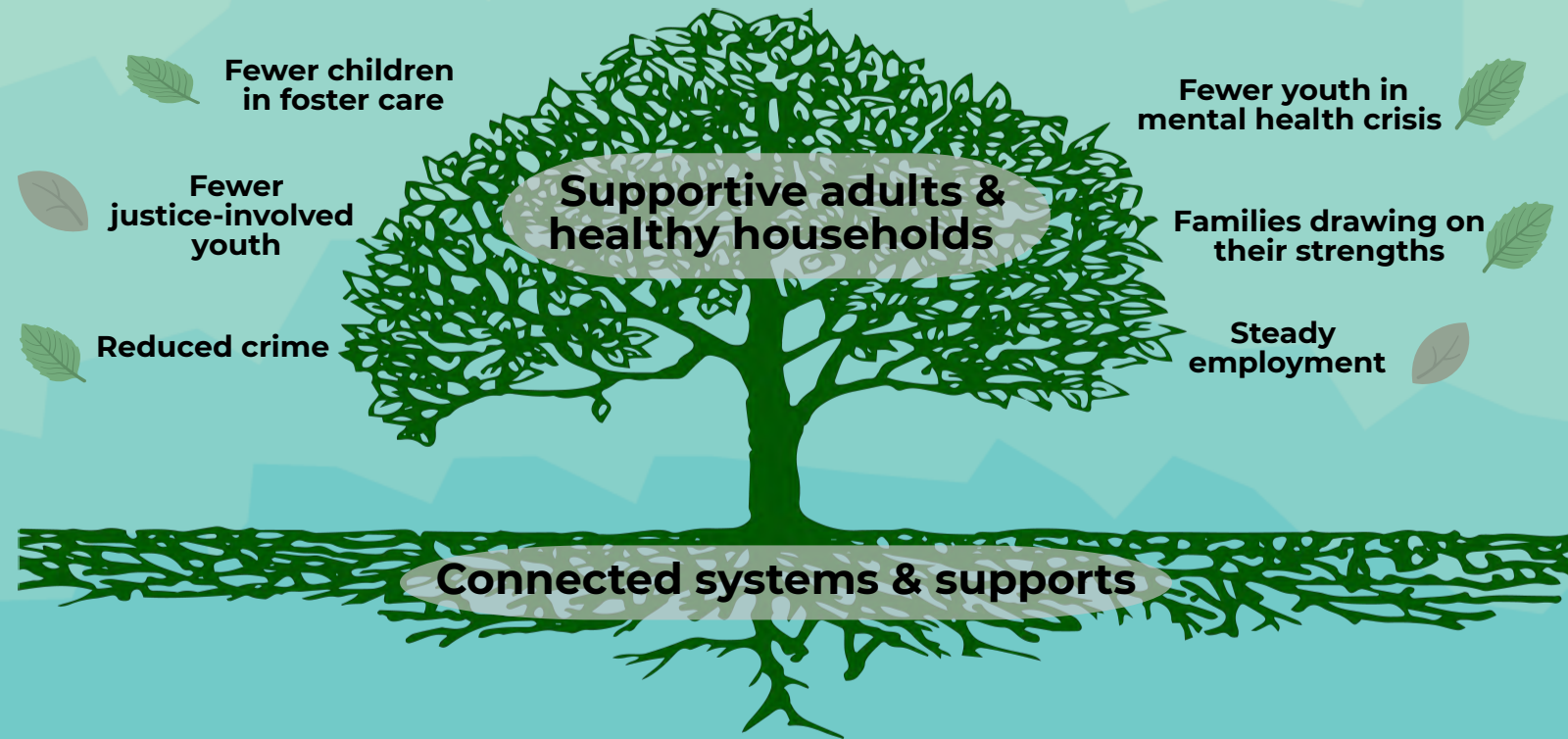
% **severely unaffordable or unsafe homes** (monthly costs over 50% of income, no kitchen, no plumbing, or over-crowding)

% families with **limited access to a grocery store**

Rate of **drug overdose** deaths (per 100,000 ppl)

BUILDING COMMUNITY RESILIENCE IN

BCR is working to transform program, practice, and policy across systems to improve the health and life outcomes of children, families, and communities.



We can build community resilience by:



Ensuring all children have a medical home

% of children have a medical home



Guaranteeing access to good, nutritious food

% of families consistently access good food



Providing school-based healthcare centers with mental health services

of these centers in our community



Promoting working class job growth

% job growth over 2017-2018



Ensuring accessible jobs

% of workers have <30 minute commute



Providing access to affordable housing

% of families spend <30% of income on housing costs

go.gwu.edu/BCR



@ResilNation



go.gwu.edu/BCRvideos



"Pair of ACEs" group

Go to go.gwu.edu/bcrsnapcite for data source information.