

SCAC Zoom meeting 4.22.21



**Agenda**

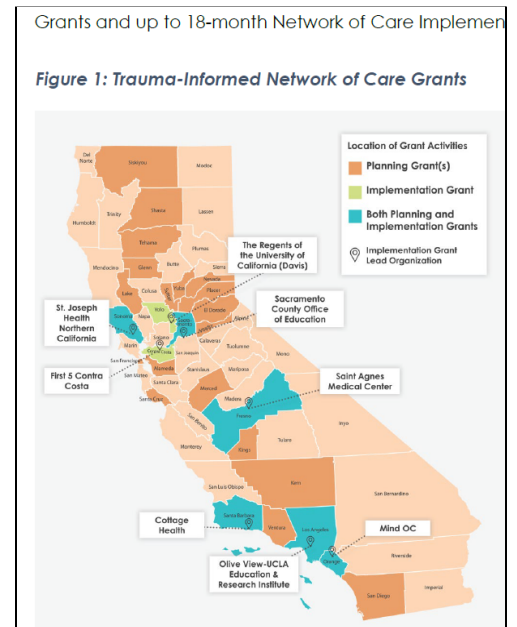
- \*Welcome
- \*Mindful Moment
- \*Introductions
- \*Early Learning Institute-Kathy Kelley
- \*2020 Mortality Report of Sonoma County- Jenny Mercado
- \*Steering Committee Report
- \*ACEs Connection-Karen Clemmer
- \*Action/Future Agenda items

**Welcome & mindful moment**

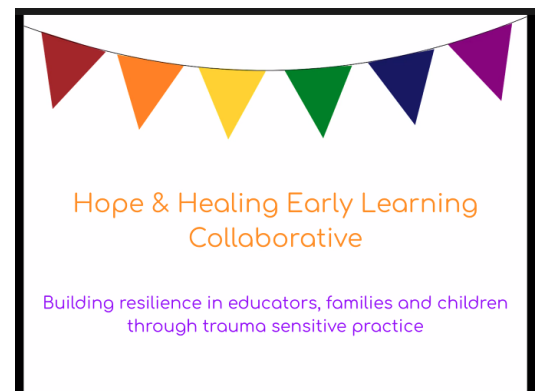
**Welcome & introductions**

- Elizabeth Smith, Sonoma County ACEs Connection Community Manager
- Paige Loeven, Project Specialist, West County Health Centers
- Michael Ellison, Buckelew Programs Administrative Assistant & Community Outreach Coordinator, Family Service Coordination
- Karen Clemmer, PACEs Connection, NW regional states.
- Meg Tippy, Associate Director of Behavioral Health, West County Health Centers
- Bryan Clement, Director of Partnerships and Policy at Dovetail Learning
- Liz George, Field Nursing Public Health Nurse
- Julianne Ballard, Sonoma Co. Field Nursing
- Brulene Zanutto, Coordinator Early Literacy and School Readiness, Sonoma County Office of Education
- Saskia Garcia, Sonoma Connect Network Manager
- Ashley VanBezooyen, ECE Director Dovetail
- Linda Irving, Sebastopol Union School District Superintendent
- Kathy Kelley, Early Learning Institute
- Natalie Stockton, Director of Counseling PPSC
- Catherine Gutfreund, MD Kaiser Permanente
- Jen Mercado, Sonoma County Epidemiologist
- Pamela Granger, Public health policy advisor at Public Health Policy Services
- Carley Moore, Sonoma County Public Health, Impact Sonoma, Tobacco/Nicotine Prevention
- Deirdre Bernard-Pearl, Pediatric Medical Director, Santa Rosa Community Health

**ACEs Aware - Sonoma Connect grantee** - represented by Saskia Garcia! Welcome Saskia! Shared [ACEs Aware Grant Summary](#)



Lead Organization	Grant Funding	County Service Area	Key Partners
St. Joseph Health	\$ 2,962,410	Sonoma County	Redwood Community Health Network Santa Rosa Community Health



**Presentation: Early Learning Institute-**

Kathy Kelley and Brulene Zanutto - Early Learning Institute - Hope & Healing ELI Collaborative

- Started 2019 and continued when Covid started
- We are a large cohort of professionals
- We are formalizing and defining what we do - working with those who serve the birth to 5 populations
- Seeking collaboration - getting calendar set up for next year,
- We focus on Trauma Sensitive Practices
- Additional classes lead by mental health providers
- Planning to do some work on developing emotional safety around fire season - for childcare providers
- We are an interagency, interdisciplinary collaborative

**Presentation: 2020 Mortality Report of Sonoma County- Jenny Mercado**

Jen Mercado, Epidemiologist

A Review of Mortality in  
Sonoma County  
2020

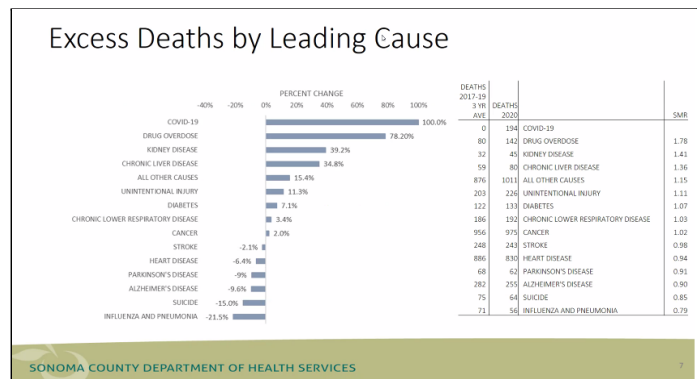
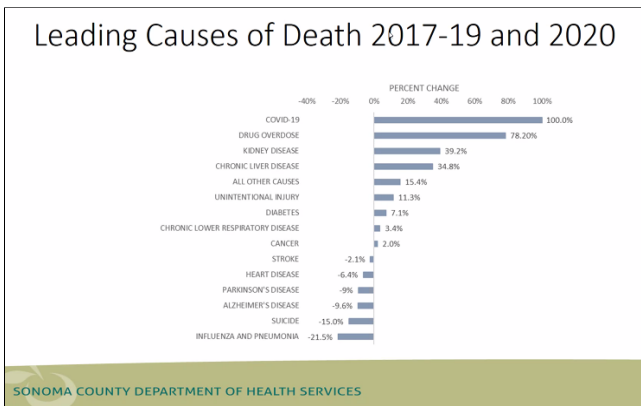
Prepared by:  
Jenny Mercado, MPH  
Epidemiologist  
April 22, 2021

SONOMA COUNTY  
DEPARTMENT OF HEALTH SERVICES

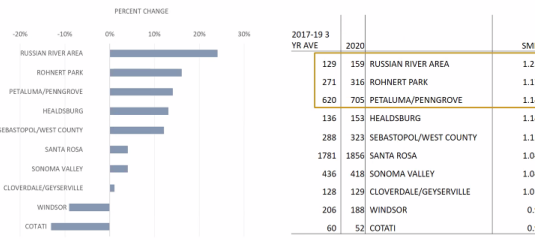
Leading Causes of Death 2017-19 and 2020\*

2017-2019 RANK	LEADING CAUSES OF DEATH	2020 RANK
1	CANCER	1
2	HEART DISEASE	2
3	ALZHEIMER'S DISEASE	3
4	STROKE	4
5	UNINTENTIONAL INJURY	5
6	COVID-19	6
7	CHRONIC LOWER RESPIRATORY DISEASE	7
8	DIABETES	8
9	CHRONIC LIVER DISEASE	9
10	SUICIDE	10
11	INFLUENZA AND PNEUMONIA	12
12	PARKINSON'S DISEASE	11
13	KIDNEY DISEASE	13
14	CONGENITAL ANOMALIES AND	14
15	HOMICIDE	15
16	CONDITIONS ORIGINATING IN THE PERINATAL PERIOD	16

SONOMA COUNTY DEPARTMENT OF HEALTH SERVICES \*2020 data are preliminary



### Excess Deaths by Geography



### Excess Deaths –Sex and Age by Race/Ethnicity

	WHITE, NH	LATINX	ASIAN/PI	BLACK	AMERICAN INDIAN/NAI	MULTI RACIAL
FEMALE	1.01	1.29	0.95	0.90	1.13	1.17
MALE	1.08	1.33	1.43	1.07	1.69	1.04
0-17 YRS	0.81	0.90	1.00	-	-	0.67
18-34 YRS	1.28	1.55	1.00	2.00	1.00	1.00
35-44 YRS	1.35	1.55	2.00	2.00	3.00	1.67
45-54 YRS	1.04	1.37	1.90	1.20	2.00	1.33
55-64 YRS	0.98	1.38	0.75	1.30	1.20	1.20
65-74 YRS	1.07	1.28	0.76	1.13	1.67	1.30
75+ YRS	1.03	1.23	1.31	0.74	1.17	0.85

■ SIGNIFICANTLY GREATER THAN EXPECTED  
■ GREATER THAN EXPECTED - NOT SIGNIFICANT  
■ LESS THAN EXPECTED - NOT SIGNIFICANT  
■ SIGNIFICANTLY LESS THAN EXPECTED

### Excess Deaths –Underlying Cause by Sex and Age

	MALE	FEMALE	0-17 YRS	18-34 YRS	35-44 YRS	45-54 YRS	55-64 YRS	65-74 YRS	75+ YRS
KIDNEY DISEASE	1.00	0.94	-	2.00	2.00	-	2.00	1.33	1.40
CHRONIC LIVER DISEASE	1.11	1.44	-	5.00	2.75	1.40	1.12	1.00	1.30
ALL OTHER CAUSES	1.15	0.90	1.20	1.31	1.54	1.00	1.14	1.10	1.15
UNINTENTIONAL INJURY	1.38	0.86	1.00	1.40	0.78	1.30	1.24	0.83	0.84
DIABETES	1.01	1.16	-	1.00	1.33	1.11	1.09	0.75	1.03
CHRONIC LOWER RESPIRATORY DISEASE	0.99	1.04	-	2.00	-	0.67	0.67	0.96	1.15
CANCER	1.11	0.94	0.67	1.00	1.31	1.07	0.92	1.07	1.10
STROKE	1.22	0.84	-	2.00	0.67	1.17	1.00	1.18	0.94
HEART DISEASE	0.99	0.88	2.00	0.75	1.00	1.21	0.84	0.95	0.93
PARKINSON'S DISEASE	0.96	0.76	-	-	-	-	-	2.00	0.79
ALZHEIMER'S DISEASE	0.90	0.91	-	-	-	1.50	1.31	0.88	-
SUICIDE	0.80	1.00	-	1.00	0.73	1.00	0.90	1.33	0.75
INFLUENZA AND PNEUMONIA	0.88	0.70	2.00	2.00	2.00	1.41	0.60	0.88	-
DRUG OVERDOSE	1.90	1.64	2.00	1.91	2.18	1.41	1.83	1.44	2.02

■ SIGNIFICANTLY GREATER THAN EXPECTED  
■ GREATER THAN EXPECTED - NOT SIGNIFICANT  
■ LESS THAN EXPECTED - NOT SIGNIFICANT  
■ SIGNIFICANTLY LESS THAN EXPECTED

### Excess Deaths –Underlying Cause by Race/Ethnicity

	WHITE, NH	LATINX	ASIAN/PI	BLACK	AMERICAN INDIAN/NAI	MULTI RACIAL
KIDNEY DISEASE	1.38	2.35	0.87	-	-	-
CHRONIC LIVER DISEASE	1.27	1.27	1.00	2.00	1.00	2.00
ALL OTHER CAUSES	1.11	1.27	1.70	0.77	2.87	1.38
UNINTENTIONAL INJURY	1.06	1.08	1.25	3.00	0.67	1.00
DIABETES	1.04	1.18	0.67	2.00	0.75	0.92
CHRONIC LOWER RESPIRATORY DISEASE	1.01	1.35	0.75	0.67	2.00	1.00
CANCER	1.02	1.01	0.88	2.00	0.50	1.00
STROKE	0.97	1.05	1.00	1.00	1.00	0.25
HEART DISEASE	0.94	0.94	1.10	0.51	1.83	1.33
PARKINSON'S DISEASE	0.89	1.50	1.00	-	-	-
ALZHEIMER'S DISEASE	0.91	1.05	0.88	0.88	-	2.00
SUICIDE	0.76	1.09	0.87	-	-	0.92
INFLUENZA AND PNEUMONIA	0.75	1.35	-	1.00	1.00	1.00
DRUG OVERDOSE	1.08	2.78	2.00	3.00	2.00	1.67

■ SIGNIFICANTLY GREATER THAN EXPECTED  
■ GREATER THAN EXPECTED - NOT SIGNIFICANT  
■ LESS THAN EXPECTED - NOT SIGNIFICANT  
■ SIGNIFICANTLY LESS THAN EXPECTED

### Excess Deaths –Sex and Age by Geography

	CLOVERDALE/GEYSERVILLE	COTATI	HEADSBURG	PETALUMA/PENNGROVE	ROHNERT PARK	RUSSIAN RIVER AREA	SANTA ROSA	SEBASTOPOL/WEST COUNTY	SONOMA VALLEY	WINDSOR
FEMALE	1.2	0.9	1.2	1.1	1.1	1.5	1.0	1.1	1.1	0.1
MALE	0.9	0.8	1.1	1.9	1.3	1.5	1.1	1.2	1.0	1.1
0-17 YRS	-	1.0	-	1.0	1.3	2.0	0.8	1.0	0.5	1.0
18-34 YRS	0.3	1.0	0.7	0.5	2.3	1.0	1.6	2.8	0.7	1.1
35-44 YRS	-	4.8	2.0	1.4	2.8	0.9	1.3	1.1	0.1	0.1
45-54 YRS	1.3	0.3	2.0	1.2	1.1	1.0	1.4	0.7	0.9	0.8
55-64 YRS	0.9	0.9	0.7	1.1	1.0	1.5	1.0	1.0	0.9	1.1
65-74 YRS	0.8	0.7	1.1	1.2	1.3	1.1	1.1	1.1	1.0	0.9
75+ YRS	1.2	0.9	1.2	1.1	1.0	1.3	1.0	1.1	1.1	0.1

■ SIGNIFICANTLY GREATER THAN EXPECTED  
■ GREATER THAN EXPECTED - NOT SIGNIFICANT  
■ LESS THAN EXPECTED - NOT SIGNIFICANT  
■ SIGNIFICANTLY LESS THAN EXPECTED

### Excess Deaths –Sex and Age by Geography

	CLOVERDALE/GEYSERVILLE	COTATI	HEADSBURG	PETALUMA/PENNGROVE	ROHNERT PARK	RUSSIAN RIVER AREA	SANTA ROSA	SEBASTOPOL/WEST COUNTY	SONOMA VALLEY	WINDSOR
FEMALE	1.2	0.9	1.2	1.1	1.1	1.5	1.0	1.1	1.1	0.7
MALE	0.9	0.8	1.1	1.9	1.3	1.5	1.1	1.2	1.0	1.1
0-17 YRS	-	1.0	-	1.0	1.3	2.0	0.8	1.0	0.5	1.0
18-34 YRS	0.3	1.0	0.7	0.5	2.8	1.0	1.6	2.8	0.7	1.0
35-44 YRS	-	4.0	2.0	1.4	2.0	0.8	1.3	1.3	3.0	0.8
45-54 YRS	1.3	0.3	2.0	1.2	1.1	1.0	1.4	0.7	0.9	0.8
55-64 YRS	0.9	0.9	0.7	1.1	1.0	1.5	1.0	1.0	0.9	1.1
65-74 YRS	0.8	0.7	1.1	1.2	1.3	1.1	1.1	1.1	1.0	0.9
75+ YRS	1.2	0.9	1.2	1.1	1.0	1.3	1.0	1.1	1.1	0.1

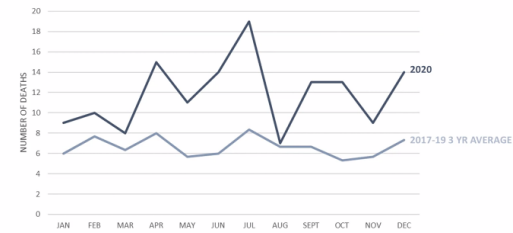
■ SIGNIFICANTLY GREATER THAN EXPECTED  
■ GREATER THAN EXPECTED - NOT SIGNIFICANT  
■ LESS THAN EXPECTED - NOT SIGNIFICANT  
■ SIGNIFICANTLY LESS THAN EXPECTED

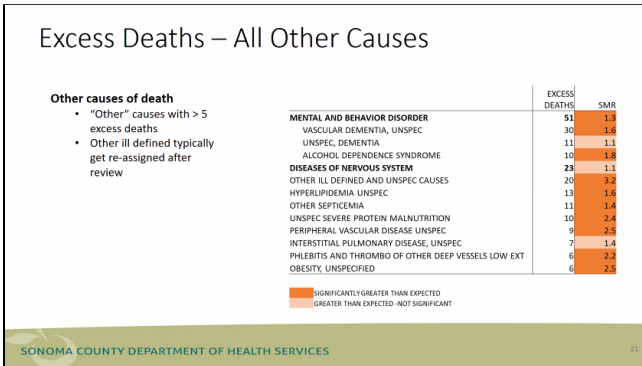
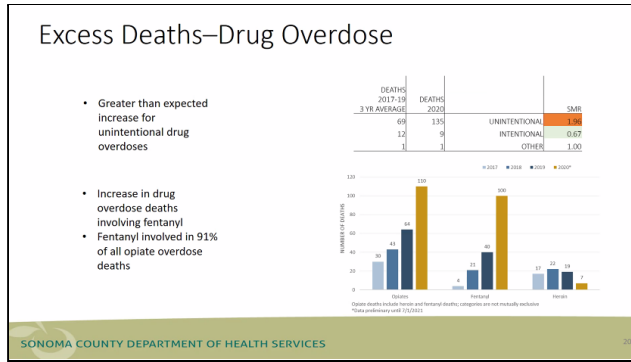
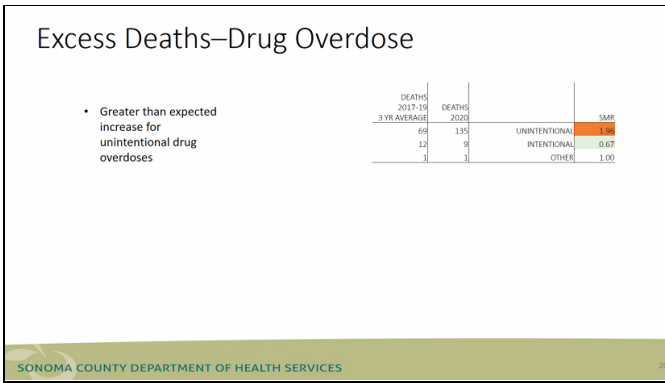
### Excess Deaths –Underlying Cause by Geography

	CLOVERDALE/GEYSERVILLE	COTATI	HEADSBURG	PETALUMA/PENNGROVE	ROHNERT PARK	RUSSIAN RIVER AREA	SANTA ROSA	SEBASTOPOL/WEST COUNTY	SONOMA VALLEY	WINDSOR
KIDNEY DISEASE	2.0	-	2.0	2.7	2.5	2.0	1.3	2.8	1.0	1.0
CHRONIC LIVER DISEASE	1.0	4.8	2.0	1.2	2.8	2.0	1.5	0.8	0.5	1.7
ALL OTHER CAUSES	1.4	1.2	1.4	1.1	1.0	0.9	1.2	1.4	1.2	0.9
UNINTENTIONAL INJURY	0.2	1.3	0.6	1.0	1.8	0.9	1.1	1.2	1.2	0.9
DIABETES	1.3	0.5	0.7	0.7	1.7	2.3	0.9	0.9	1.3	0.6
CHRONIC LOWER RESPIRATORY DISEASE	0.8	1.3	1.4	0.8	0.9	1.5	0.8	1.4	0.9	1.4
CANCER	1.2	0.5	1.1	1.0	1.2	1.1	1.0	1.1	0.9	0.8
STROKE	0.4	0.3	0.5	0.9	1.5	2.8	1.0	0.9	0.9	0.6
HEART DISEASE	0.7	0.8	1.0	1.1	1.5	1.0	0.9	1.1	0.9	0.8
PARKINSON'S DISEASE	1.5	-	1.0	0.9	2.0	0.5	0.9	1.3	0.8	-
ALZHEIMER'S DISEASE	0.8	-	0.7	1.2	0.6	1.8	0.8	0.8	0.9	0.9
SUICIDE	0.5	0.5	1.0	0.9	0.5	0.5	0.9	0.8	0.8	1.2
INFLUENZA AND PNEUMONIA	2.0	3.8	-	1.0	1.8	0.8	0.8	0.8	0.5	0.3
DRUG OVERDOSE	0.7	0.7	2.0	1.1	3.3	1.5	1.7	1.5	3.2	2.0

■ SIGNIFICANTLY GREATER THAN EXPECTED  
■ GREATER THAN EXPECTED - NOT SIGNIFICANT  
■ LESS THAN EXPECTED - NOT SIGNIFICANT  
■ SIGNIFICANTLY LESS THAN EXPECTED

### Drug Overdose Deaths by Month





**\*Steering Committee Report** - The committee provided an update that they had their first meeting and still accepted a couple more members. If anyone is interested reach out to Elizabeth. The committee is focusing on building a sustainable structure to strengthen SCAC and deepen the awareness within Sonoma County.

**\*PACES Connection-Karen Clemmer** Quick review of [PACES Connection](#), the name change how to join Discussed rationale for adding “P” for positive childhood experiences. Encouraged folks to join PACES Connection - then join the SCAC community! [www.acesconnection.com/g/sonoma-county-aces-connection](http://www.acesconnection.com/g/sonoma-county-aces-connection)

Shared link to JAMA article: [Positive Childhood Experiences and Adult Mental and Relational Health in a Statewide Sample: Associations Across ACEs Levels](#)

JAMA Pediatrics | Original Investigation  
 Positive Childhood Experiences and Adult Mental and Relational Health in a Statewide Sample  
 Associations Across Adverse Childhood Experiences Levels  
 Christina Bethell, PhD, MBA, MPH; Jennifer Jones, MSW; Narangerel Gombojav, MD, PhD; Jeff Linkenbach, EdD; Robert Sege, MD, PhD

**Question** Are positive childhood experiences (PCEs) associated with adult depression and/or poor mental health (D/PMH) and adult-reported social and emotional support (ARSES) independent from adverse childhood experiences (ACEs)?

**Findings** In this cross-sectional study, adults reporting higher PCEs had lower odds of D/PMH and greater ARSES after accounting for ACEs. The associations of PCEs with D/PMH also remained stable when controlling for ARSES.

**Meaning** Positive childhood experiences demonstrate a dose-response association with adult D/PMH and ARSES after adjustment for ACEs; assessing and proactively promoting PCEs may reduce adult mental and relational health problems, even in the concurrent presence of ACEs.

[www.acesaware.org/wp-content/uploads/2021/01/Network-of-Care-Grant-Summary-2.1.21.pdf](http://www.acesaware.org/wp-content/uploads/2021/01/Network-of-Care-Grant-Summary-2.1.21.pdf)  
 St. Joseph Health \$ 2,962,410 Sonoma County Redwood Community Health Network Santa Rosa Community Health

**Next Steps:** The next meeting is on May 27th. Michael Ellison of Buckelew will be presenting. To be added to the agenda for future meetings please reach out to [elizabeth@projectwholechild.com](mailto:elizabeth@projectwholechild.com) If your organization has a meeting coming up SCAC can attend or present at please email Elizabeth.