



Carpinteria  
Children's Project

---

Proyecto de Niños  
de Carpintería

**Santa Barbara County**

**PUBLIC**

**Health**



**DEPARTMENT**

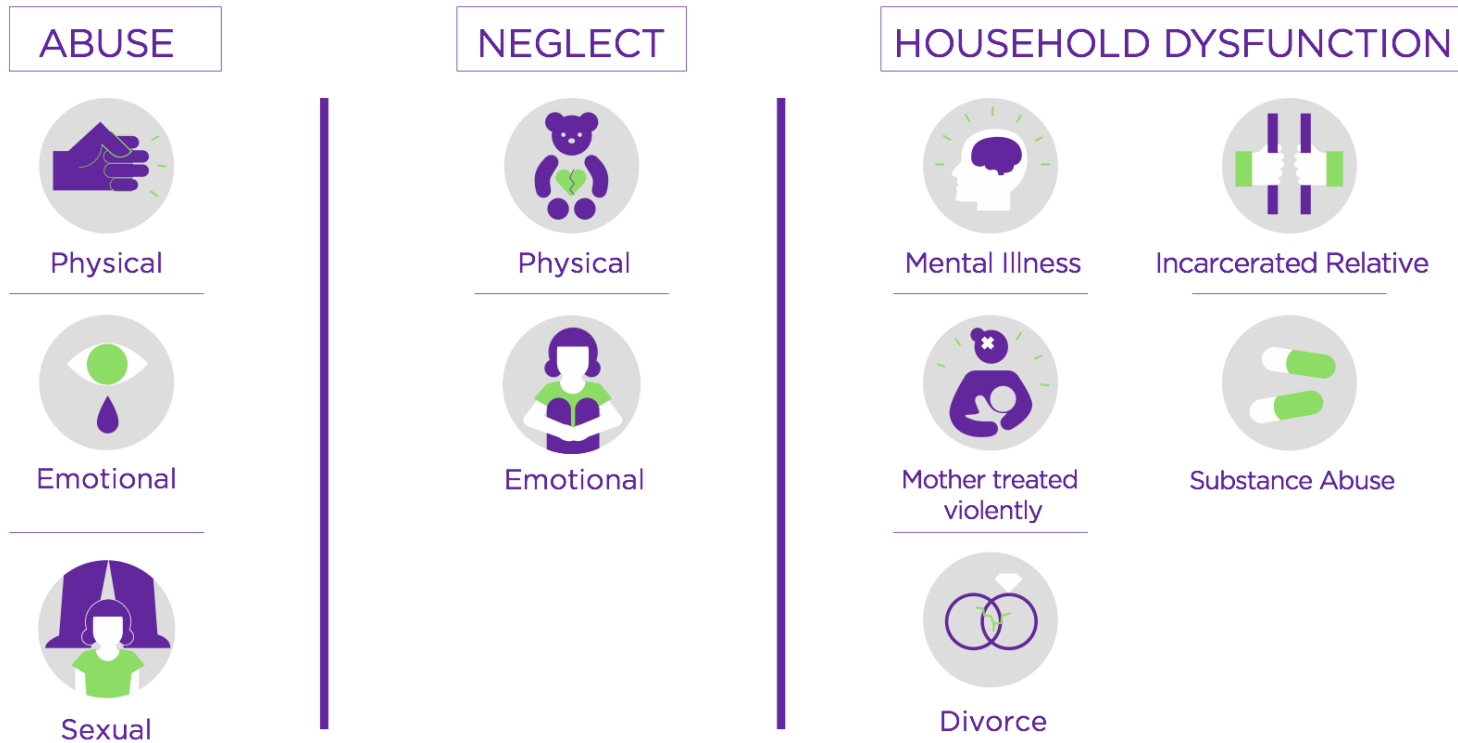
# Carpinteria Adverse Childhood Experiences Screening and Intervention

---

MARIA CHESLEY, PHD EXECUTIVE DIRECTOR

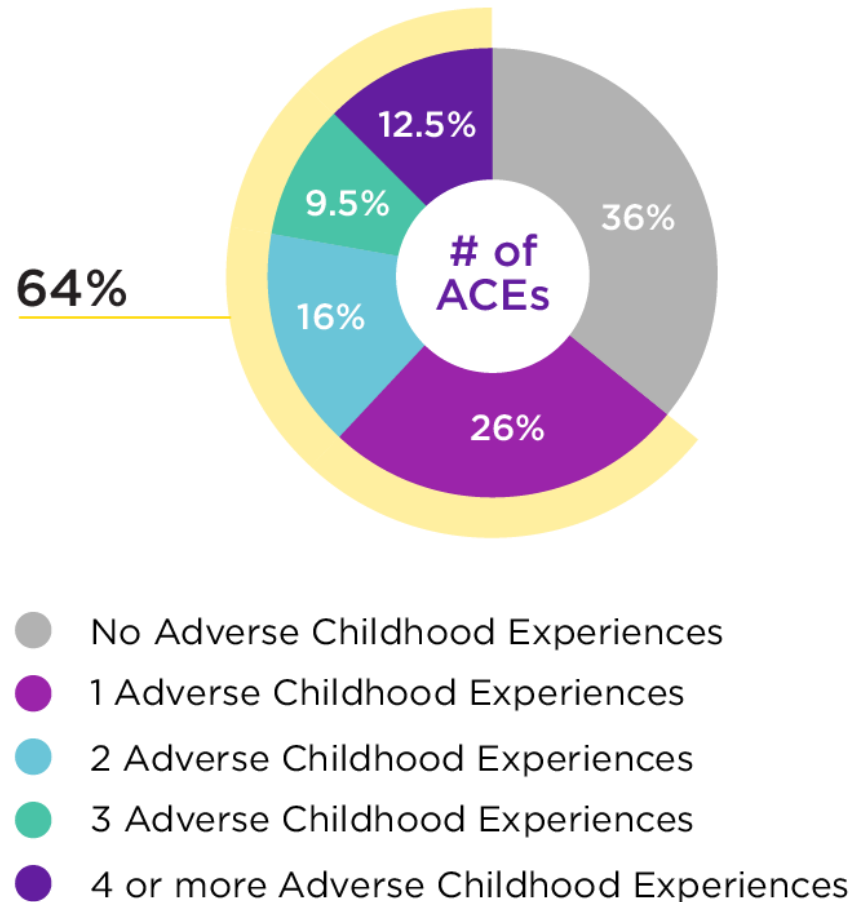
MARGARET DODDS, MD CARPINTERIA HEALTH  
CARE CENTER

# The threat: Adverse Childhood Experiences (ACEs)



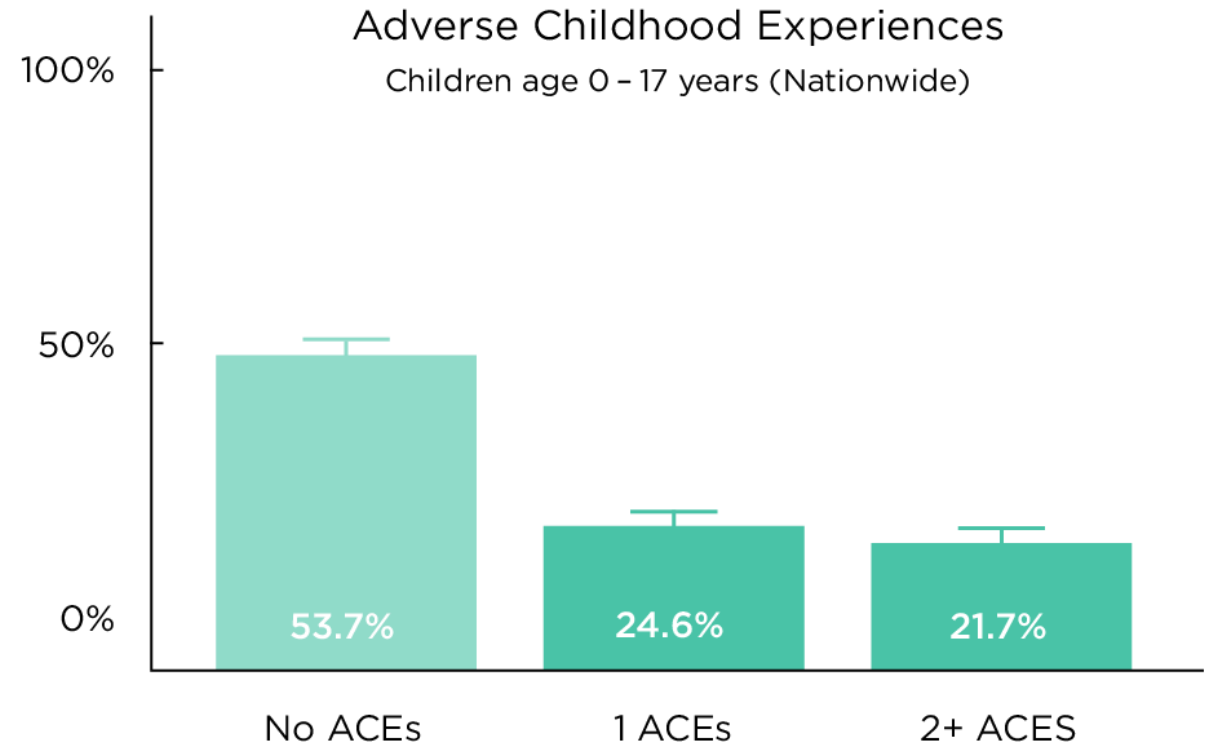
# Prevalence:

- Nearly 2 out of 3 adults have at least one ACE



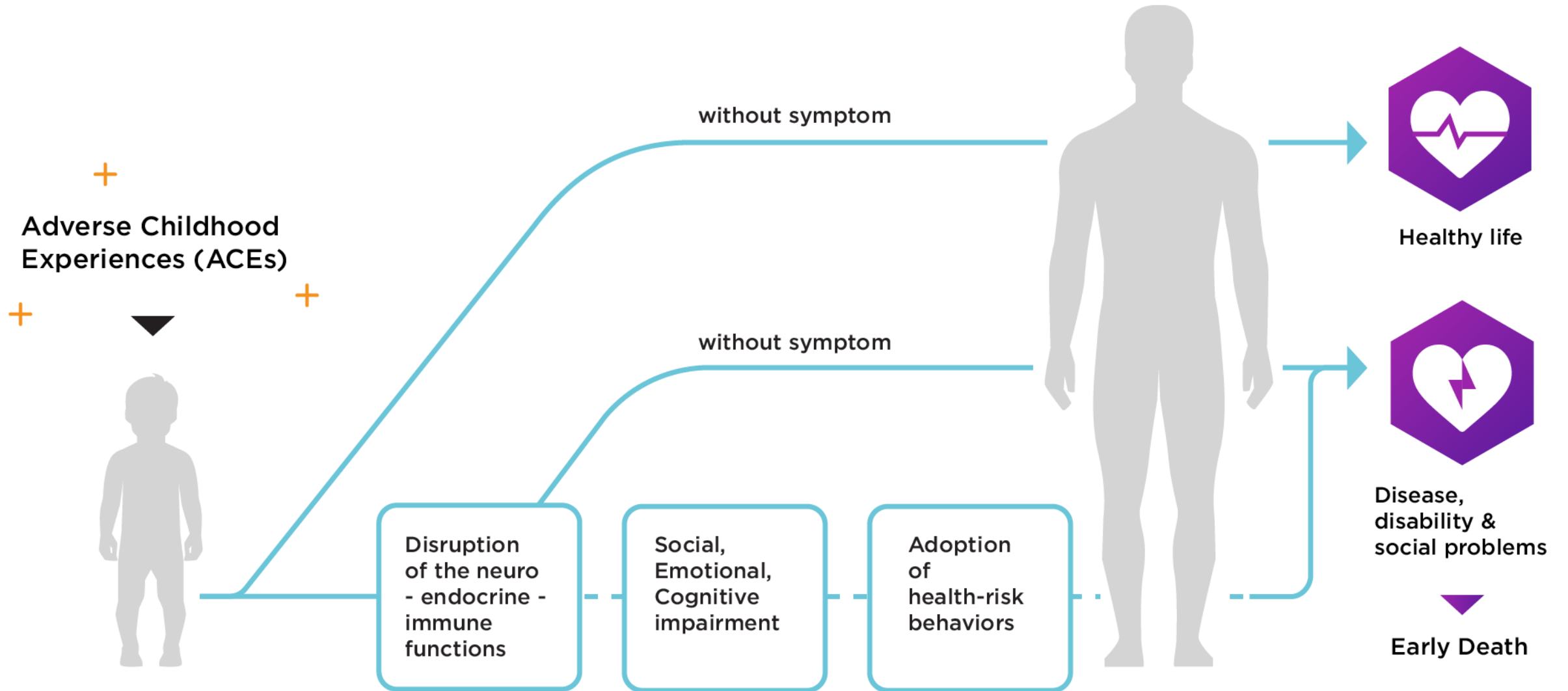
Source: CDC-Kaiser ACE Study (1998)

- Nearly half of children (34.8 million) have at least one ACE



[http://www.cahmi.org/wp-content/uploads/2017/10/aces\\_fact\\_sheet.pdf](http://www.cahmi.org/wp-content/uploads/2017/10/aces_fact_sheet.pdf)

# The impact: Variable symptoms



# Together, we can:



## PREVENT

Scale up programs and policies that prevent ACEs and mitigate the effects of toxic stress. Raise awareness of ACEs as a public health crisis.



## SCREEN

Screen every child for ACEs in the well child exam so that all children can have the opportunity to reach their full potential.



## HEAL

Support children with toxic stress response with effective and promising interventions to prevent negative long-term health outcomes.

Maternal Child  
Adolescent Health

Carpinteria Health  
Care Center



ACEs Screen for children 0 to 24 months

Refer to Family Resource Center if parent has 2+ ACEs

or

child has 1+ ACE

## CYW Adverse Childhood Experiences Questionnaire (ACE-Q) Child

To be completed by Parent/Caregiver

Today's Date: \_\_\_\_\_

Child's Name: \_\_\_\_\_ Date of birth: \_\_\_\_\_

Your Name: \_\_\_\_\_ Relationship to Child: \_\_\_\_\_

**Many children experience stressful life events that can affect their health and wellbeing. The results from this questionnaire will assist your child's doctor in assessing their health and determining guidance.** Please read the statements below. Count the number of statements that apply to your child and write the total number on the line provided.

**Please DO NOT mark or indicate which specific statements apply to your child.**

**1) Of the statements in Section 1, HOW MANY apply to your child? Write the total number in the box.**

### Section 1. *At any point since your child was born...*

- Your child's parents or guardians were separated or divorced
- Your child lived with a household member who served time in jail or prison
- Your child lived with a household member who was depressed, mentally ill or attempted suicide
- Your child saw or heard household members hurt or threaten to hurt each other
- A household member swore at, insulted, humiliated, or put down your child in a way that scared your child OR a household member acted in a way that made your child afraid that s/he might be physically hurt
- Someone touched your child's private parts or asked your child to touch their private parts in a sexual way
- More than once, your child went without food, clothing, a place to live, or had no one to protect her/him
- Someone pushed, grabbed, slapped or threw something at your child OR your child was hit so hard that your child was injured or had marks
- Your child lived with someone who had a problem with drinking or using drugs
- Your child often felt unsupported, unloved and/or unprotected

**2) Of the statements in Section 2, HOW MANY apply to your child? Write the total number in the box.**

### Section 2. *At any point since your child was born...*

- Your child was in foster care
- Your child experienced harassment or bullying at school
- Your child lived with a parent or guardian who died
- Your child was separated from her/his primary caregiver through deportation or immigration
- Your child had a serious medical procedure or life threatening illness
- Your child often saw or heard violence in the neighborhood or in her/his school neighborhood
- Your child was often treated badly because of race, sexual orientation, place of birth, disability or religion



Family Resource Center  
of the Carpinteria Children's Project





# For parents:

## Core education and individualized interventions

---

- Brief interventions/mini-lessons
- Resilience screen
- Needs assessment & goal setting through Family Development Matrix
- At least an initial and two follow-up meetings
- Access to counseling
- Access to all services of the Family Resource Center and the Thrive Carpinteria Partner Network

# 8 components of care



Quality Sleep



Nutrition



Exercise



Supportive Relationships



Mental Health Care (if desired)



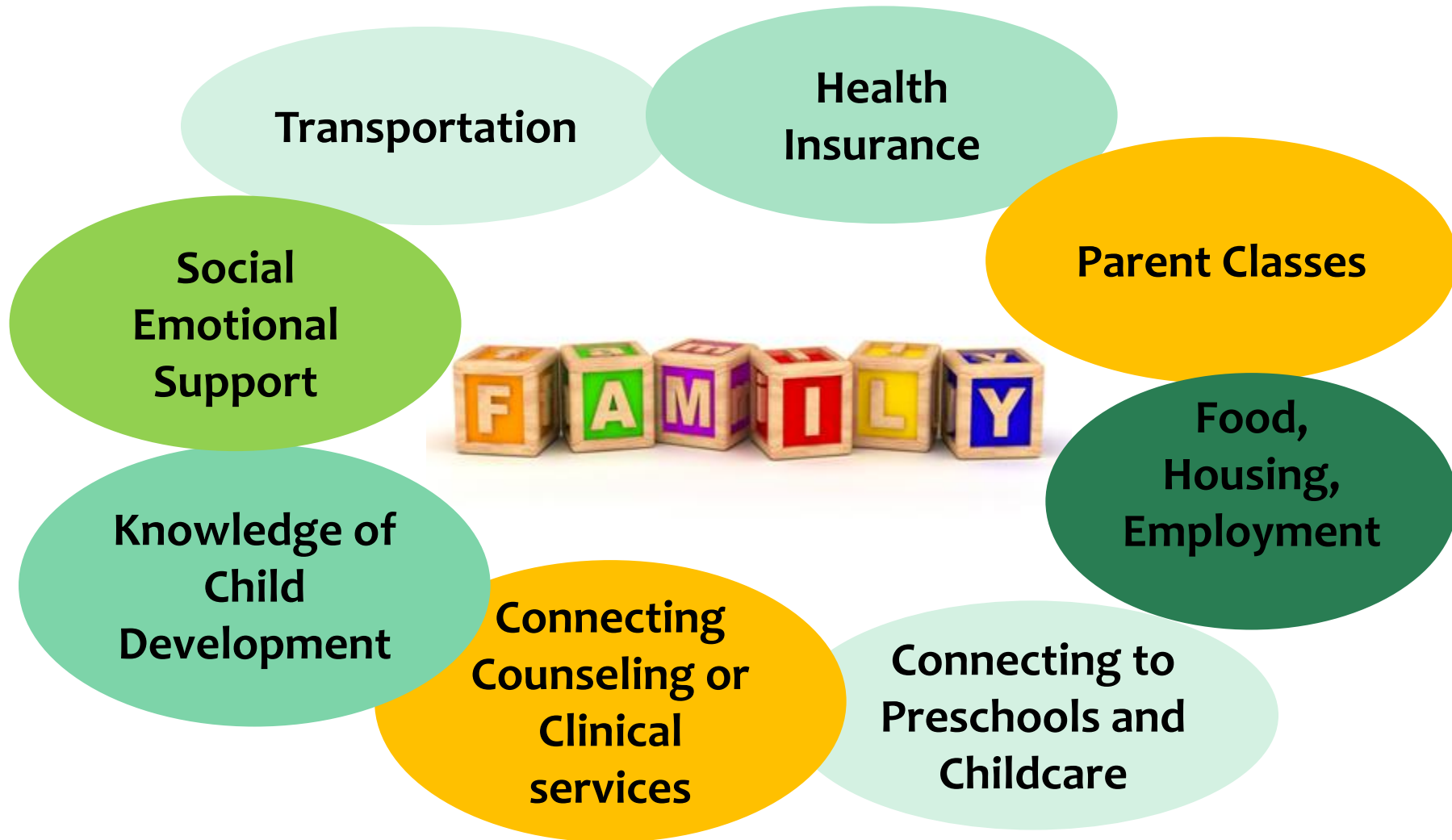
Mindfulness



Financial Stability



# Network Hub: CCP's Family Resource Center



# Network Partners



# A coherent system of care for families

---



# Outcomes/What success looks like:

---

1. Increase identification, family support, and behavioral health interventions for families at risk because of parental or child ACEs.
2. Increase parental resilience and positive change in families who engage in intervention.
3. Increase staff resilience and positive change at the Family Resource Center and Carpinteria Health Care Clinic.
4. Improve the system of care in Carpinteria by integrating medical, family support, and behavioral health services with the goal of spreading the effort to the rest of the county.

# Evaluation Data

---

## FAMILIES WHO PARTICIPATE IN INTERVENTIONS

- Resilience screen
- Family Development Matrix/Needs assessment
- Attainment of self-selected goals
- Participation in classes, services offered
- Individual interviews by Just Communities

## STAFF AT CLINIC AND FAMILY RESOURCE CENTER

- Resilience screen
- ACEs screen
- Manslach Burnout Inventory
- Individual interviews by Just Communities



A campaign to  
change health  
and education  
outcomes in  
Carpinteria





Healthy Families

Successful  
children

Strong  
community

