

Data and Policy Barriers for Infant and Early Childhood Screenings

This infographic presents information from the California Landscape Analysis¹

Data and Coordination of Systems Challenges



- * Lack of data to determine whether infants and toddlers are receiving appropriate developmental, behavioral, and trauma screenings and to prevent duplications of screenings
- * Lack of feedback loops between Regional Centers and providers, following appropriate referrals by providers
- * Insufficient funding for data systems building
- * Siloed data within and across different programs and agencies
- * Confidentiality regulations concerning cross-systems data sharing
- * Lack of information about existing data systems and their locations
- * Lack of time and workforce required to overcome data and coordination issues and to create a cohesive data system
- * Need for improved technology to better link systems and improve data coordination across agencies

Strategies

- * Support cross-system collaborative partnerships focused on cross-agency data building systems
- * Increased funding for data collection and cross-systems linkages
- * Share models of effective feedback mechanisms
- * Expand workforce capacity to tackle data collection issues
- * Develop a resource sheet outlining data systems available and their location

Strategy Example: Regional Center Feedback Mechanisms

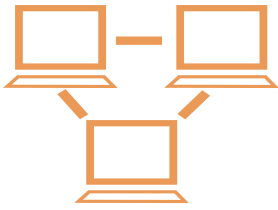
Most Regional Centers with feedback mechanisms across CA:



Notified primary care physicians if referred child qualified for services²

Provided feedback to primary care physicians by sending a letter with parent written consent/permission³

Strategy Example: Orange County's Screening Registry⁴



Orange County developed an online database which allows primary health care and community based providers to enter and/or view data on developmental and behavioral screenings as well as referrals and outcomes

The registry was designed to identify at risk children, reduce duplication of screening efforts, and create linkages to referral resources

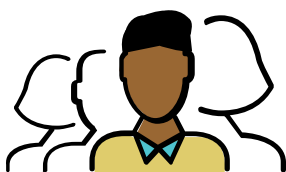
The registry meets all federal and state requirements for confidentiality

Policy Challenges

- * Lack of meaningful cross-agency partnerships and intentional collaborations
- * Limited number of family and community stakeholders on advisory boards who can influence policy
- * Lack of coordination between agencies conducting screening resulting in duplication of efforts



Strategies



- * Support cross-agency collaboration to integrate state-wide infant and early childhood mental health strategies and policies
- * Increase number of family and community stakeholders on advisory boards

Strategy Example

The California Statewide Screening Collaborative (CSSC) is an intragency collaboration of infant and early childhood stakeholders



The CSSC provides a forum for information sharing to facilitate cross-system collaborations that address screening policies, processes to overcome barriers, sharing of new resources, and appropriate referrals of infants and toddlers

References

- 1 WestEd (June, 2017). Developmental Screening Landscape Analysis. A Report prepared for the California Departments of Developmental Services and Public Health. Sacramento: WestEd Center for Prevention & Early Intervention.
- 2 WestEd (March, 2019). Regional Center Early Services Programs Feedback to Physicians Report: WestEd Center for Prevention and Early Intervention
- 3 Ibid.
- 4 Help me Grow Orange County. (n.d.). OC Children's Screening Registry. Retrieved August 21, 2019, from <http://www.helpmegrowoc.org/developmental-screening-registry.html>