

Preventing Early Adversity to Achieve Health & Health Equity



Melissa T. Merrick, PhD

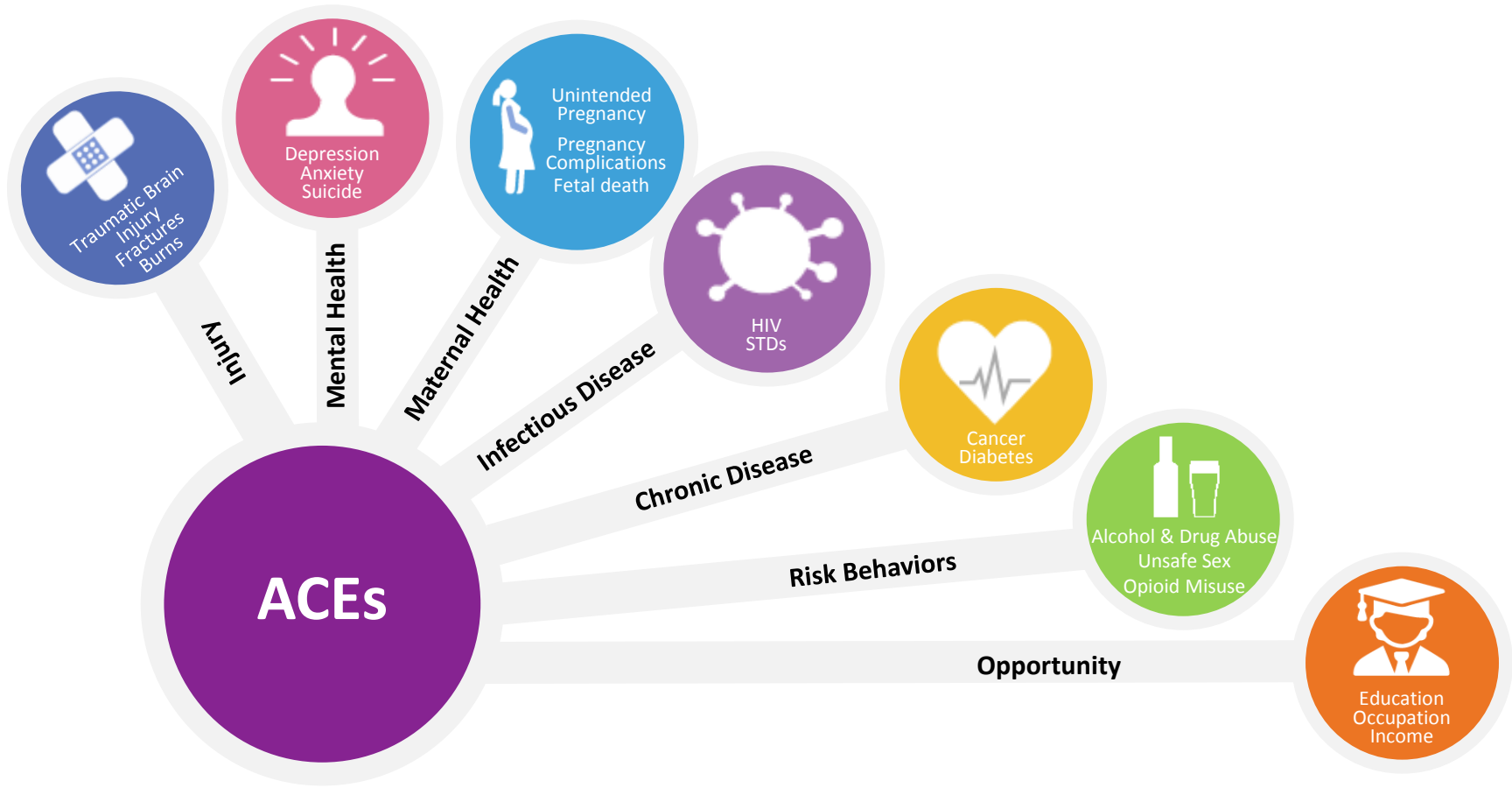
MA EfC Summit– November 29, 2018



..... *the issue*

1 BILLION
CHILDREN EXPERIENCE
VIOLENCE ANNUALLY

Early Adversity has Lasting Impacts



ACEs can have lasting effects on....



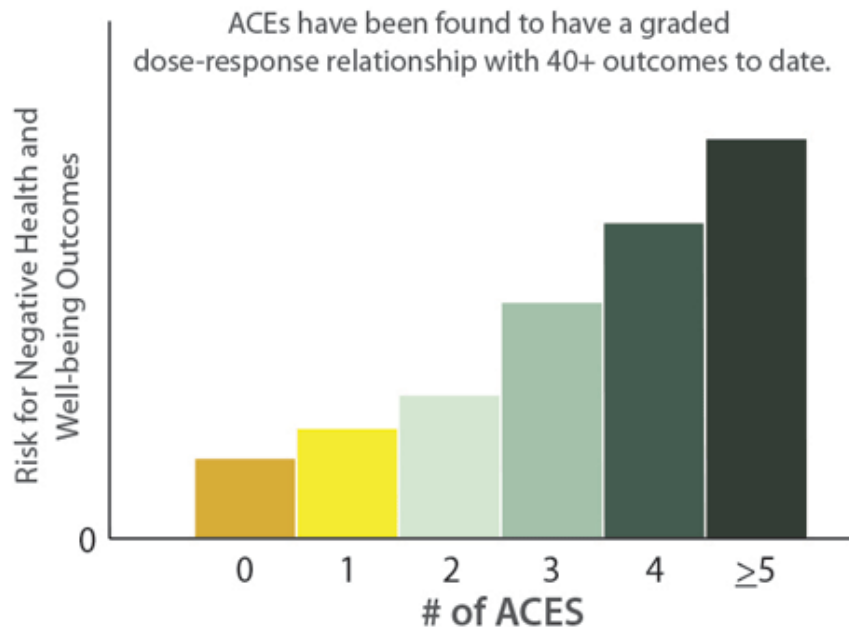
Health (obesity, diabetes, depression, suicide attempts, STDs, heart disease, cancer, stroke, COPD, broken bones)



Behaviors (smoking, alcoholism, drug use)



Life Potential (graduation rates, academic achievement, lost time from work)



*This pattern holds for the 40+ outcomes, but the exact risk values vary depending on the outcome.

Adverse Childhood Experiences

ACEs are experiences that may be traumatic to children and youth during the first 18 years of life such as experiencing violence or other types of emotionally disturbing exposures in their homes and communities.



ACES not included in the traditional measure:

- Bullying
- Teen dating violence
- Peer to peer violence
- Witness violence in community or school
- Homelessness
- Death of a parent

The Pair of ACEs

Adverse Childhood Experiences

Maternal
Depression

Physical &
Emotional Neglect

Emotional &
Sexual Abuse

Divorce

Substance
Abuse

Mental Illness

Domestic Violence

Homelessness

Incarceration

Adverse Community Environments

Poverty

Discrimination

Community
Disruption

Lack of Opportunity, Economic
Mobility & Social Capital

Poor Housing
Quality &
Affordability

Violence

All Content



Search

[Advanced Search](#)

[< Previous Article](#)

Volume 3, No. 6, e262–e263, June 2018

[Next Article](#)

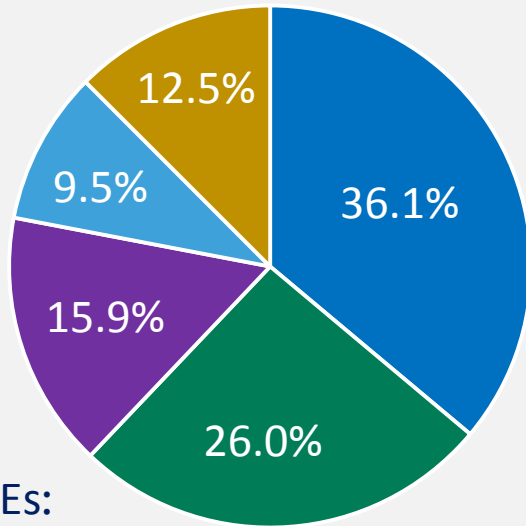
 [Comment](#)

Adverse childhood experiences or adverse childhood socioeconomic conditions?

[David C Taylor-Robinson](#) , [Viviane S Straatmann](#), [Margaret Whitehead](#)

How Common are ACEs?

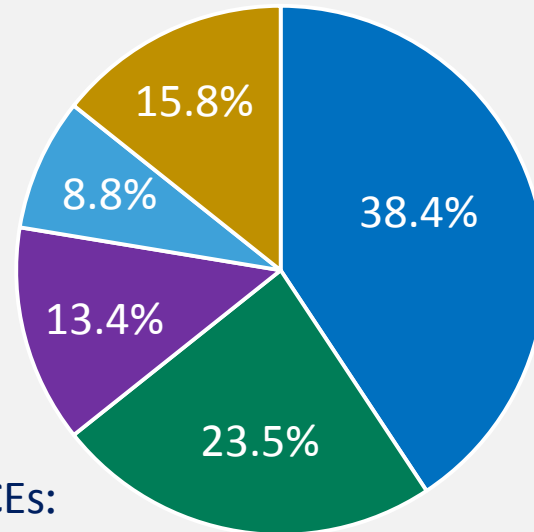
ACE Score Prevalence
CDC-Kaiser ACE Study



of ACEs:

■ Zero ■ One ■ Two ■ Three ■ Four or More

ACE Score Prevalence
2011-2014 BRFSS ACE Module



of ACEs:

■ Zero ■ One ■ Two ■ Three ■ Four or More



Research

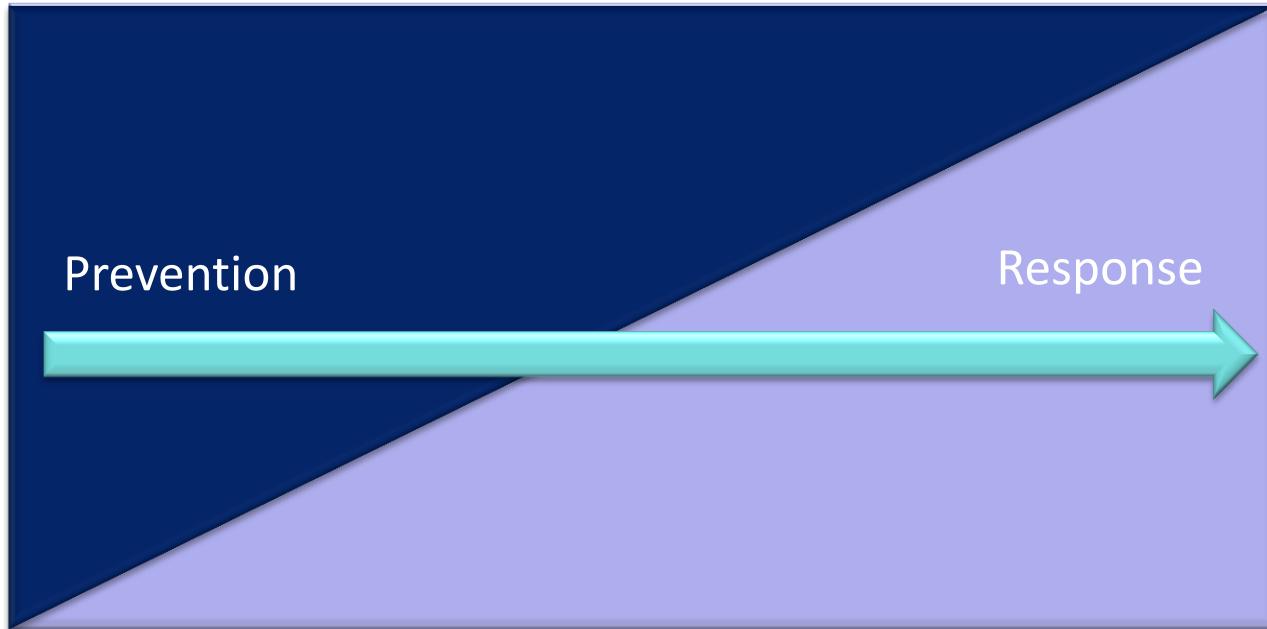
JAMA Pediatrics | [Original Investigation](#)

Prevalence of Adverse Childhood Experiences From the 2011-2014 Behavioral Risk Factor Surveillance System in 23 States

Melissa T. Merrick, PhD; Derek C. Ford, PhD; Katie A. Ports, PhD; Angie S. Guinn, MPH



Role of Public Health in Violence Prevention



ROLE OF CRIMINAL JUSTICE, CHILD WELFARE, SOCIAL SERVICES, HEALTHCARE



Assuring safe, stable, nurturing
relationships and environments for all children



Safe



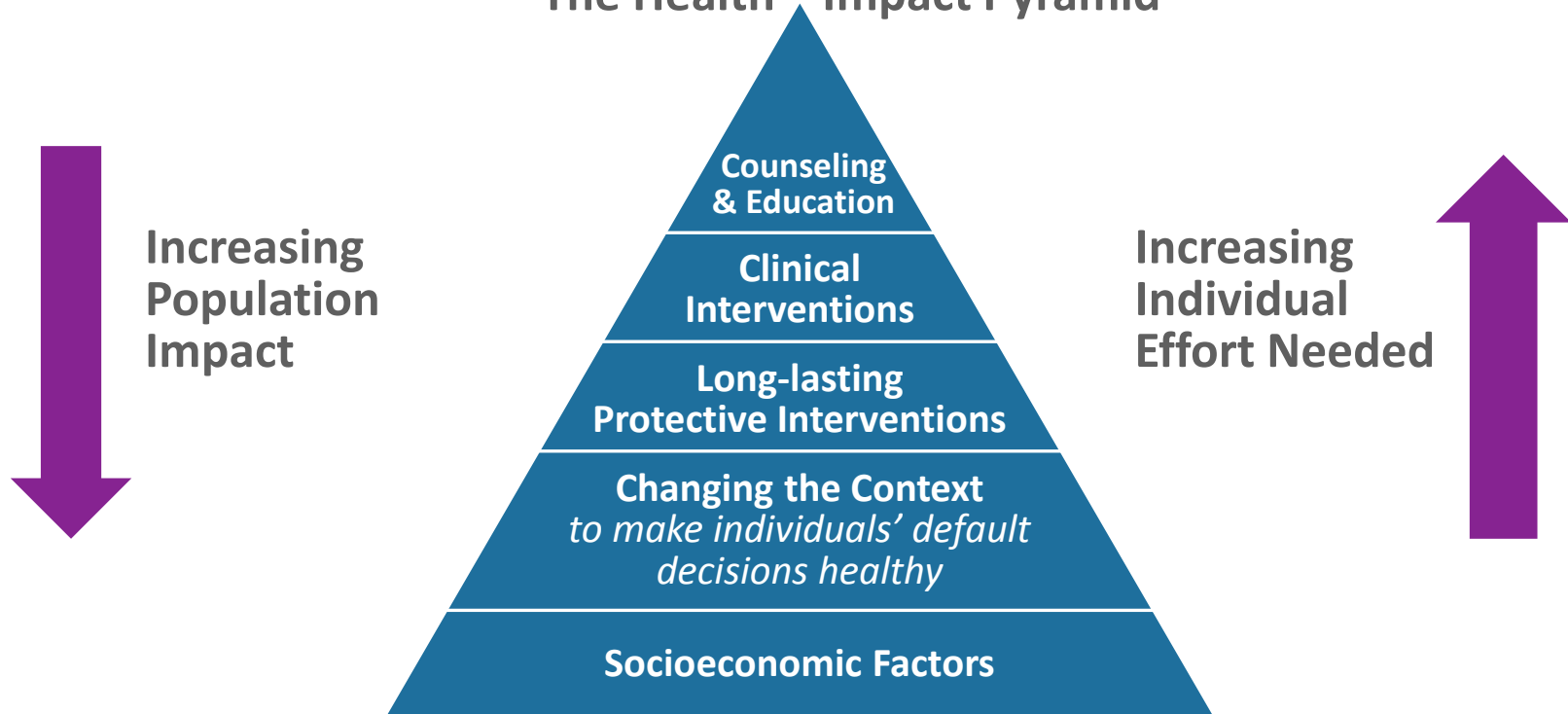
Stable



Nurturing

Prioritize Environmental Change

The Health Impact Pyramid



5 Strategies to Prevent Early Adversity



Change social norms to support parents and positive parenting



Enhance parenting skills to promote healthy child development



Strengthen economic supports for families



Provide quality care and education early in life

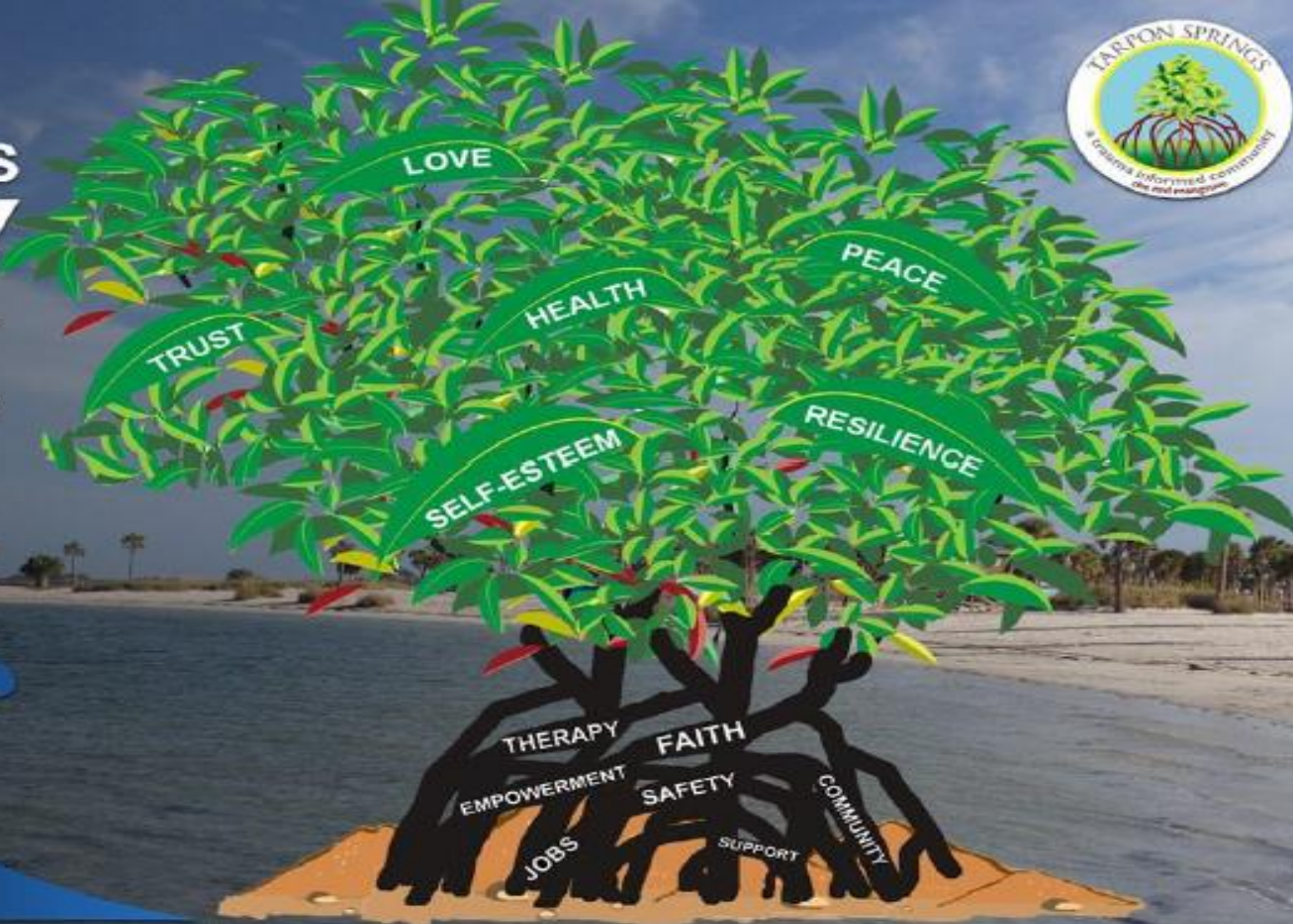


Intervene to lessen harms and prevent future risk

Vision: A Healthy and Equitable Society



STRONG ROOTS **GROW** A RESILIENT COMMUNITY



FOR MORE INFORMATION ABOUT RESILIENCE PLEASE VISIT PEACE4TARPON.ORG



Marc.HealthFederation.org

www.HealthFederation.org

TOGETHER We Can Prevent Early Adversity

Developing New
Partnerships and
Working Across Sectors



Including:
Public Health, Government,
Health Care Services,
Social Services, Education,
Businesses, Justice, Housing,
Non-Governmental
Organizations, Foundations,
Media

“Our children’s future and the world’s future are one.”

-Dr. C. Henry Kempe



Melissa T. Merrick, PhD
mmerrick@cdc.gov

Visit CDC's National Center for Injury Prevention and Control web site: www.cdc.gov/ncipc

Visit the Division of Violence Prevention's ACE web site: www.cdc.gov/violenceprevention/acestudy

Visit our ACE Online Resources:
vetoviolence.cdc.gov/apps/phl/images/ACE_Accessible.pdf
vetoviolence.cdc.gov/apps/aces/

For more information, contact CDC
1-800-CDC-INFO (232-4636)
TTY: 1-888-232-6348 www.cdc.gov

The findings and conclusions in this report are those of the authors and do not necessarily represent the official position of the Centers for Disease Control and Prevention.

