


# Building Community Resilience

## Collective Impact & The Trauma Informed Lens

PRESENTED BY RESILIENT COLORADO




---

---

---

---

---

- ### Objectives
- Describe the basic concepts of Trauma Informed Framework
  - Define the conditions required for Collective Impact
  - Consider ways to build community resilience

---

---

---

---

---

# ACEs are

## ADVERSE CHILDHOOD EXPERIENCES

WWW.RESILIENTCOLORADO.ORG/ACES

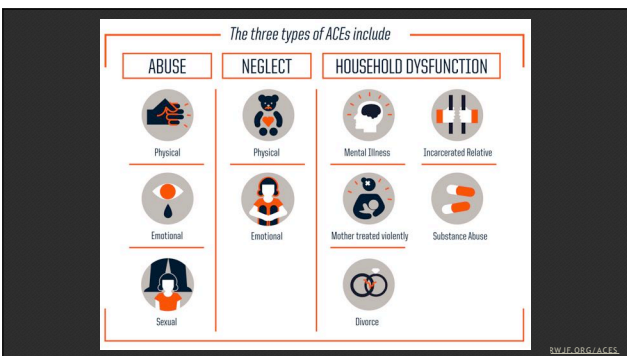
---

---

---

---

---



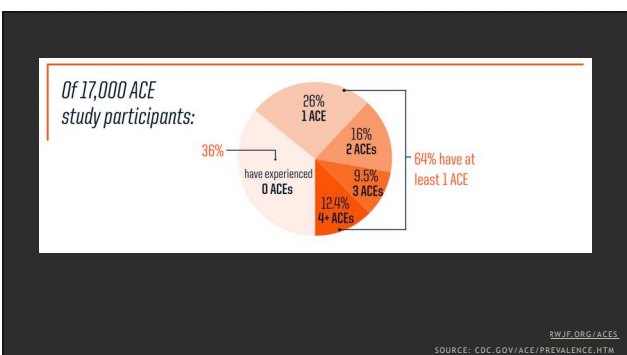

---

---

---

---

---



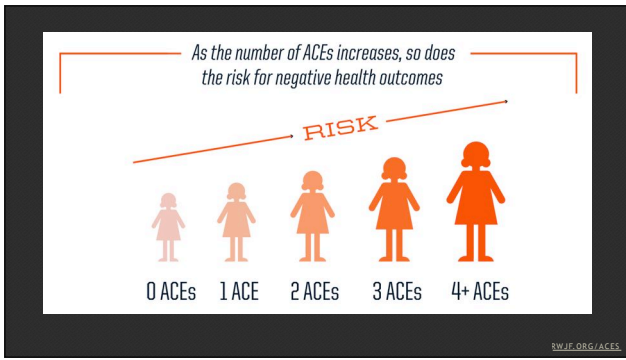

---

---

---

---

---




---

---

---

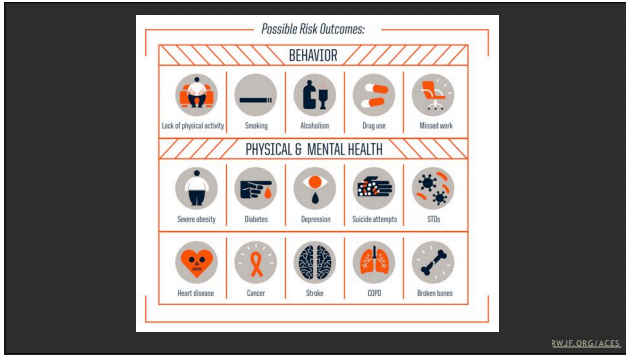
---

---

---

---

---




---

---

---

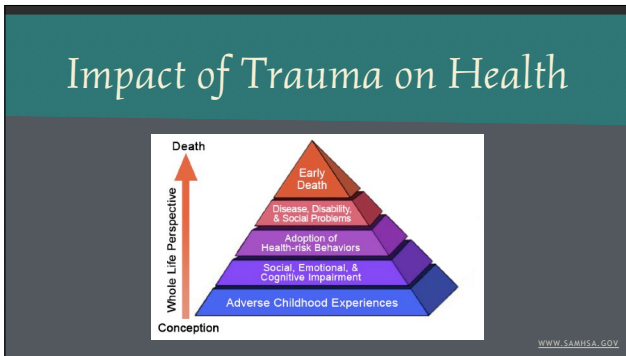
---

---

---

---

---




---

---

---

---

---

---

---

---

“Building resilient and trauma-informed communities is essential to improving public health and well-being.”

WWW.SAMHSA.GOV

---

---

---

---

---

---

---

---

## What's Equity Got to Do with It?

Building Community Resilience

Milken Institute School of Public Health | Sumner M. Redstone Global Center for Prevention & Wellness

THE GEORGE WASHINGTON UNIVERSITY

HTTPS://PUBLICHEALTH.GWU.EDU/DEPARTMENTS/REDSTONE.CENTER/RESILIENT-COMMUNITIES

---

---

---

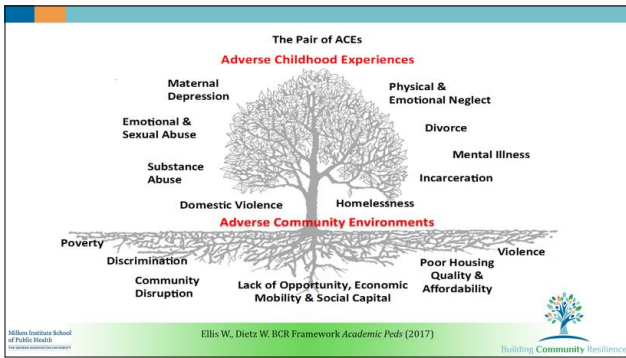
---

---

---

---

---




---

---

---

---

---

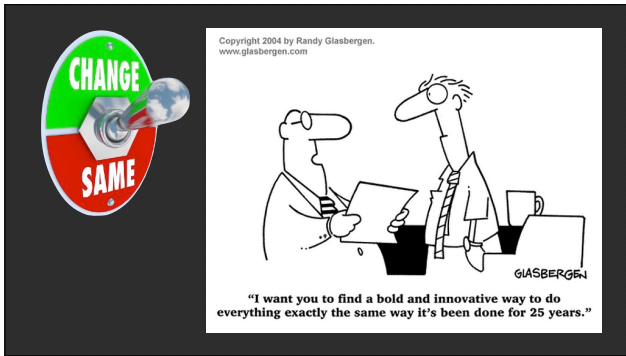
---

---

---

---

---




---

---

---

---

---

---

---

---

---

---




---

---

---

---

---

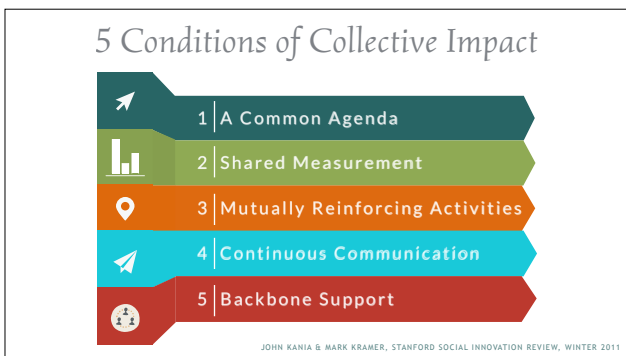
---

---

---

---

---




---

---

---

---

---

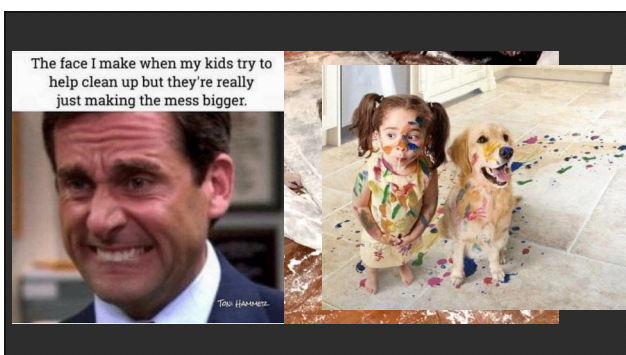
---

---

---

---

---




---

---

---

---

---

---

---

---

---

---

# Trauma Informed Principles

- Safety & Cultural Humility
- Trustworthiness
- Choice
- Collaboration
- Empowerment

---

---

---

---



---

---

---

---

Doty Shepard  
doty@resilient-colorado.com  
970-317-2032



---

---

---

---



PO Box 497 Bayfield, CO 81122

(970) 317-2032

www.resilient-colorado.com

---

Building Trauma Informed, Resilient Communities

## Building Community Resilience: Collective Impact & The Trauma Informed Lens

---

### Resource Links for More Information:

- The [ACEs Primer Video](#) is a 5 minute video introduction to the Adverse Childhood Experiences study.
- [Building Community Resilience Collaborative](#)
- SAMHSA [Building Resilient & Trauma-Informed Communities](#)
- RWJF Dashboard: [Could where you live influence how long you live?](#)
- [ACEs Connection](#) and [ACEs Too High](#) post blogs & current research
- This 2 minute overview is a great introduction to [Collective Impact](#)
- [Collective Impact Forum](#): resources, peer advice forum
- [John Kania & Mark Kramer's Seminal Article, "Collective Impact"](#)
- [The Culture of Collective Impact](#)
- [Project 2025, American Foundation for Suicide Prevention](#)