

Health Equity and COVID-19: Opportunities to Improve Child Wellbeing through Policy



Wednesday, May 13, 2020
1:00 PM - 2:30 PM

Webinar Housekeeping

Use **Drop Down Menu** to:

- Mute and Unmute
- Open Participant Pane
- Open Chat

The screenshot shows a Zoom webinar interface. At the top, a navigation bar includes buttons for RETURN, Audio, Mute Me, Participants, Chat, Annotate, and Q&A. A blue arrow points from the 'Participants' button to the text 'Use Drop Down Menu to:'. Below the navigation bar, the main content area displays the webinar title 'Essentials for Childhood Initiative' and the date 'Friday, April 24, 12:30 PM - 1:30 PM'. On the right side, the 'Participant Pane' is open, showing a list of participants: 'Hannah James (Host)' and 'daniela (me)'. A blue circle highlights the icons for Mute and Unmute, with an arrow pointing to the text 'Mute and Unmute'. Another blue circle highlights the icons for Turn Webcam ON and OFF, with an arrow pointing to the text 'Turn Webcam ON and OFF'. Below the participant list, the 'Raise Your Hand' icon is circled in blue, with an arrow pointing to the text 'Raise Your Hand'. At the bottom, the 'Chat' pane is open, showing a list of recipients: 'Host', 'Presenter', 'Host & Presenter', 'Host, Presenter & Panelists', 'All Participants', 'All Panelists', and 'Hannah James'. A blue circle highlights the 'Send to: Host' dropdown menu, with an arrow pointing to the text 'Chat Sent to:'. The Windows taskbar is visible at the bottom of the screen.

Participant Pane

Mute and Unmute

Turn Webcam ON and OFF

Raise Your Hand

Chat

Sent to:

- HOST for tech issues only
- ALL to engage with participants

2



Today's Presenter and Facilitators



Elena Costa
Program
Coordinator
Essentials for
Childhood Initiative



Dr. Flojaune Cofer
Senior Director of
Policy, All Children
Thrive, California, and
Policy Subcommittee
Co-Chair



Lucy Roberts, MA
Director of
Lead4Tomorrow's
Family Hui Program,
and Equity
Subcommittee Co-
Chair



Michael Williams,
MSW
Director of
Strategies 2.0, and
Equity
Subcommittee Co-
Chair



Today's Agenda

1	Health Equity and COVID-19: Opportunities to Improve Child Wellbeing through Policy
2	Q&A with Dr. Cofer
3	Facilitated Discussion & Equity Subcommittee Overview
4	Next Steps



Purpose

- (1) Examine what **success** could look like in addressing COVID-19 by describing **equity concerns arising for children and families** that have been exacerbated by the pandemic, (2) share examples where California's **approach has been effective**, and (3) explore **opportunities for improvement**
- **Participate in a discussion** facilitated by Equity Subcommittee Chairs, Lucy Roberts and Michael Williams, about ways in which **organizations and programs can implement** the information shared by Dr. Cofer
- ***Suggest priorities in light of COVID-19, for the Essentials for Childhood Initiative, Equity Subcommittee***



Flojaune Cofer, PhD, MPH

Senior Director of Policy for
the All Children Thrive,
California (ACT-CA) Project,
Public Health Advocates





**PUBLIC HEALTH
ADVOCATES**

Health Equity & COVID-19: Opportunities to Improve Child Wellbeing through Policy

**Flojaune G. Cofer, PhD,
MPH**
Senior Director of Policy
[@WearePHA](#) [@Flojaune](#)

The FRAME

All Children Thrive - California (ACT-CA) is a bold initiative predicated on the idea that children's health and well-being is an **intersectional problem** – shaped by **many factors and systems** – and thus **requires collaborative solutions that bring communities together** to positively impact how children grow, develop, live, learn, and play.



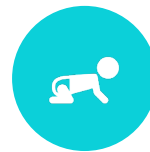
The North Star: Goals

- **Shape Perspective:** Help cities realize the essential role they play in public health efforts to address child well-being and trauma prevention
- **Innovate through Collaboration:** Network cities through learning communities
- **Shift Power:** Embed community voices into the City policy and systems development process
- **Sustainable Change:** Pass policies, re-engineer structures, and leverage new and existing funding sources to create an environment that meets the needs of families and creates a landscape for ongoing system improvements

Prominent Themes for Policy Approach



Community-based mental health strategies



Early childhood enrichment – programs/places



Healthy Food Access



Housing – Cost, insecurity, homelessness



Public Safety – defined using a public health model



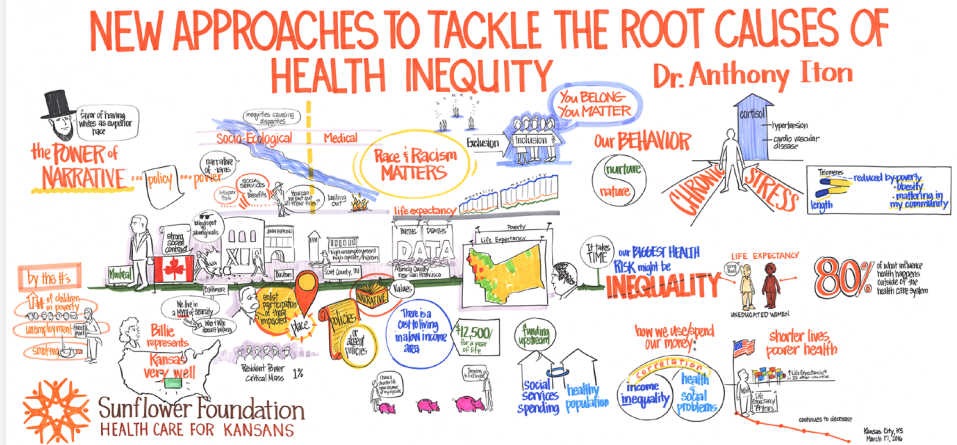
Community Engagement in decision-making (long term)

WEBINAR OBJECTIVES

- This interactive webinar will examine what success could look like in addressing COVID-19 by describing equity concerns arising for children and families that have been exacerbated by the pandemic, sharing examples where California's approach has been effective, and exploring opportunities for improvement.
- Together, you and I will:
 - Describe the relationship between infection control and public health by identifying the implications for equity
 - Explore policy strategies to address COVID-19 impact health equity
 - Share public health policy ideas to support communities

HEALTH INEQUITY

- A **systematic and unjust** difference in health and illness
 - Related to but ***different*** than health disparities
 - Not all health disparities result from inequities
- Based on membership in an oppressed group with historical/ongoing restricted access to societal resources
- Not “natural”



WHAT IS INTERSECTIONALITY?

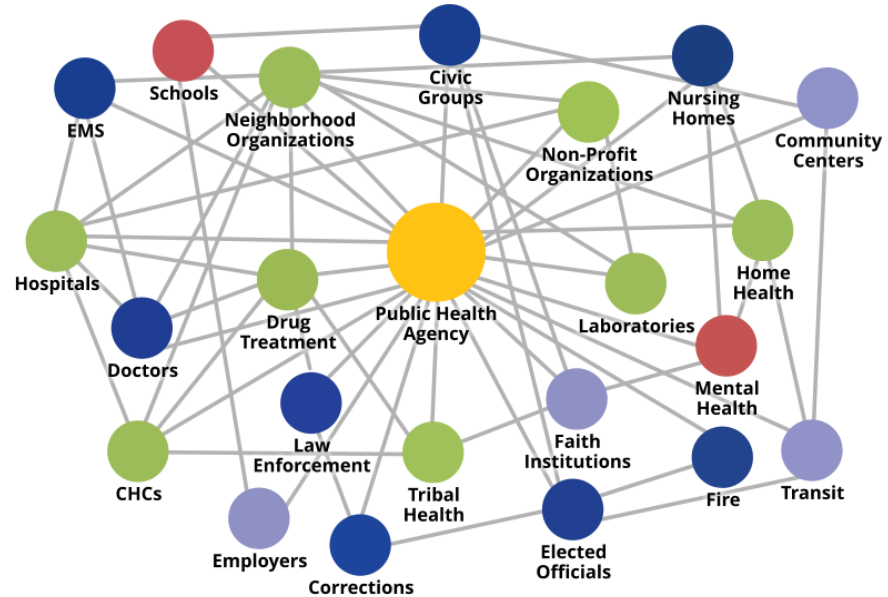


Disproportionality in Black and Latinx

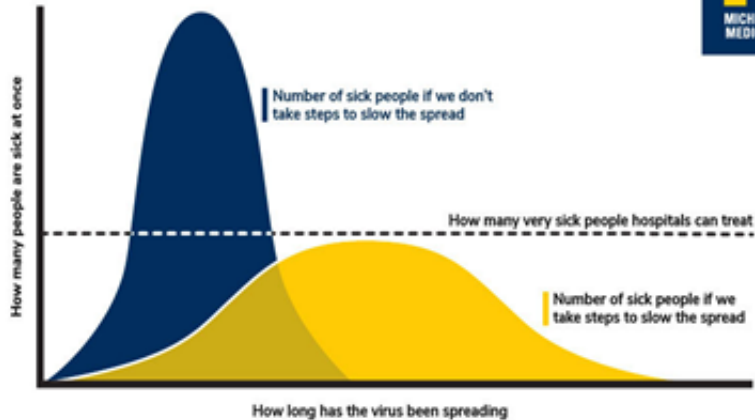
- Entirely explained by structural racism
- Historical and ongoing cycle driven by social determinants of health
- Results in:
 - Increased risk for infection
 - Increased risk for complications



Public Health Goals and Essential Services



Infection Control



- COVID-19 named (February 11)
- Hygiene and Low contact (mid-February)
- Declaring a state of emergency (March 4)
- Canceling large gatherings (March 11)
- Physical Distancing (March 11)
- Education Facilities Closed (March 19)
- Closing non-essential businesses (March 19)
- Stay at home order (March 19)
- Masks (April 3)
- Expanded testing capacity
- Securing personal protective equipment for health care settings

Community Supports

- Education & Childcare
- Housing
- Economic Assistance
- Food assistance
- Social and emotional support

Please share what you've seen as state and local successes in the COVID-19 response



Emergency Education

- Emergency education vs distance learning
- Tracking students out of classroom
- Providing supplies for in home education
- Allowing classrooms to be used by high-need students
- Parental preparation and support



Please respond and share ideas in the chat box

Housing

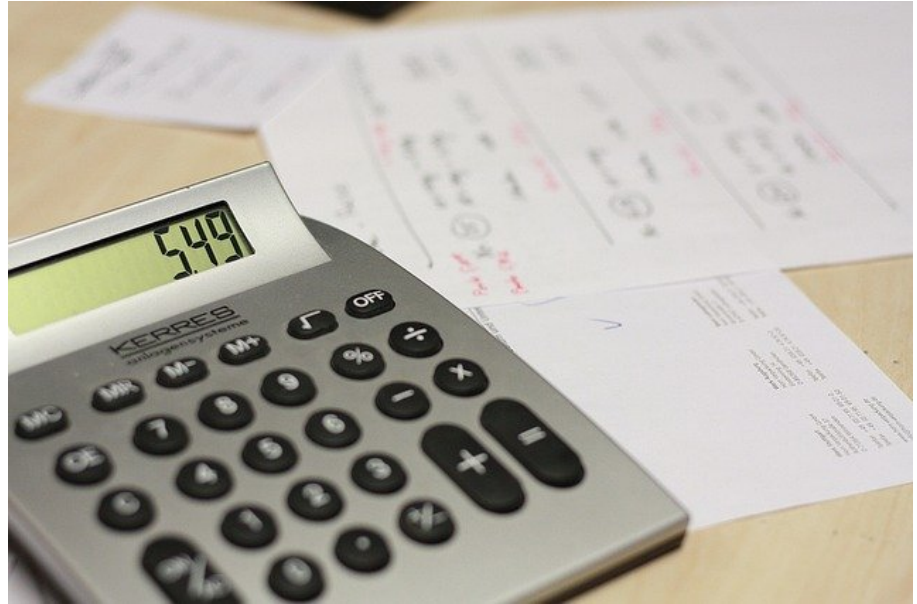
- PPE and right to rest protections for unhoused
- Vouchers for immediate housing
- Affordable housing development
- Extending eviction protections
- Mortgage assistance and rental
- Non-predatory repayment plans (if needed)



Please respond and share ideas in the chat box

Economic Assistance

- Extend cash payments
- Automatically triggered payments in real-time
- Expand EITC payments and eligibility
- Utility payment assistance
- Expanding unemployment benefits
- Raise/eliminate asset limits for program eligibility
- Expand paycheck protections
- Small business vouchers
- Investments in locally-owned or nonprofit ventures to create jobs to improve resilience



Please respond and share ideas in the chat box

Food Assistance

- Adapting WIC for virtual engagement
- Expanding SNAP benefits and eligibility
- Streamline food assistance application process
- Expand access to school meals
- Increased funding to food banks



Please respond and share ideas in the chat box

Social and Emotional Support

- Guidance on messaging to young children
- Support for stress management
- Re-imagining traditions
- Establishing programming for children and adolescents



Please respond and share ideas in the chat box

Q&A with Dr. Cofer



Questions?



Facilitated Discussion



Essentials for Childhood Initiative: Equity Subcommittee Overview



Activities



Develop a shared understanding and **definition** of the term “equity”



Invite **guest speakers** to present in spaces such as coalition meetings and/or webinars on the topic of **equity and how it intersects** with adverse childhood experiences (ACEs)



Upon request, **collaborate, review, and provide recommendations/guidance** to other EfC Initiative subcommittees and/or other entities



Identify **priority populations** and geographic **regions** to focus efforts



Listening sessions to ID how best to tailor interventions to needs of priority populations

Updates

Operational guidelines will be developed next.

Underway

Providing input: Drivers for Community and Policy Change

Opportunities being explored on the topic of the “Digital Divide”

Dependent on the above item



Guiding Discussion Questions

Given Dr. Cofer's presentation and our current public health crisis:

- ☉ Where do you see opportunities for equity to be enhanced through **policy and systems change** to improve the **lives of children and families**?
- ☉ What **supports might you need** to expand or enhance the emphasis on equity in the work you do or with those you serve?

Announcements





**STAY HOME. SAVE
LIVES. CHECK IN.**

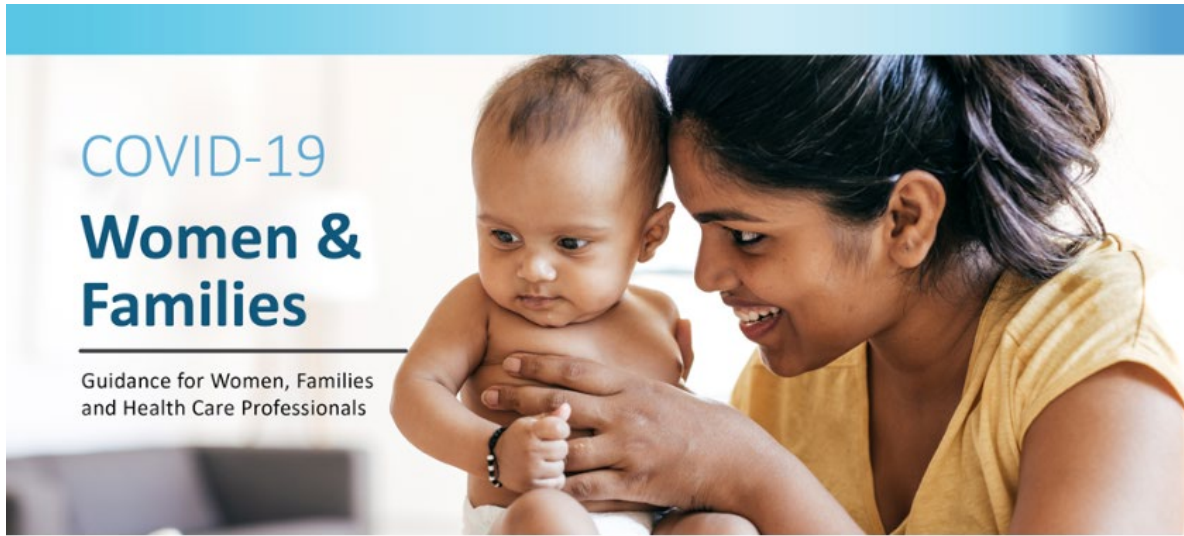


More Information at [covid19.ca.gov](https://www.covid19.ca.gov)

Stay Home, Save Lives, Check-in Campaign

<https://www.gov.ca.gov/2020/03/31/governor-newsom-launches-campaign-to-protect-health-and-well-being-of-older-californians-during-covid-19-pandemic/>





For COVID-19 Resources for Women and Families, please visit the California Department of Maternal Child Adolescent Health at:
<https://www.cdph.ca.gov/Programs/CFH/DMCAH/Pages/COVID-19/Guidance-for-Women-and-Families.aspx>





Participate in the Census

Let's ensure all Californians are counted so we can put those resources to good use here at home!



BUILD BETTER ROADS AND SCHOOLS



FUND COMMUNITY PROGRAMS FOR SENIORS, CHILDREN AND FAMILIES



CREATE JOBS



IMPROVE HOUSING

How To Complete

Online: For the first time, the Census form will be available to complete online in 13 languages.

By Phone: The Census can be completed by phone in 13 languages including Telecommunication Device for the Deaf.

By Mail: The paper Census form will be available in English and Spanish languages and can be mailed back to the U.S. Census Bureau.

To learn more, visit [CaliforniaCensus.org](https://www.californiacensus.org)

Strategies 2.0

Strategies 2.0 is a catalyst for the professional skills, organizational structure, and community relationships necessary to mitigate the risk factors for child abuse and neglect, and to promote child, family, and community well-being.

Growing Knowledge, and Networks for Professionals Working with Families.

Be The One Campaign Webinar

Friday, May 22, 2020
10:00-11:30 am



Description: The Be the One webinar will present research and action steps designed to engage community members, agencies, and leaders in trauma/healing and resilience focused work. The overall goal is to present information that will assist agencies, leaders, and community members in building safer, more stable, more nurturing relationships and stronger, healthier communities. This is foundational work and can serve as a base for engaging in broader, deeper discussions on structural, historic, and institutional trauma and the creation of healing within our communities.

By the conclusion of the webinar, participants will:

- Understand resilience research.
- Learn ways to become engaged in and engage others in building safe, stable, nurturing relationships and stronger communities.
- Have concrete strategies to create a collaborative, community-wide effort to build resilience and mitigate risk factors for child abuse and neglect through the Be the One campaign.
- Learn from examples related to agencies, school systems, and individuals.

Speakers:

- Natalie Audage, MPH, Child Abuse Prevention Coordinator, Yolo County Children's Alliance
- Lucy Morse Roberts, Executive Director, Family Hui

Register on our website: StrategiesCA.org

Connect with us:

[Facebook.com/StrategiesCA](https://www.facebook.com/StrategiesCA) | StrategiesCA.org | [LinkedIn/StrategiesCA](https://www.linkedin.com/company/StrategiesCA)

Participate in the Be the One Campaign Webinar

Register at:

[https://tinyurl.com/
betheonemay22](https://tinyurl.com/betheonemay22)



Centers for Disease Control and Prevention
National Center for Injury Prevention and Control
Division of Violence Prevention

THE STAY HERE-OS

FIGHTING WHAT'S
OUT THERE, IN HERE.



For more information, visit www.StayHereOs.org

Next Steps





Next Steps

- For more information about the All Children Thrive, California project, please visit: <https://phadvocates.org/our-work/#all-children-thrive-act-california>
- To reach out to Dr. Cofer directly, please email fc@phadvocates.org
- Please consider joining us for a special presentation from Dr. Robert Sege from the Tufts University, School of Medicine:
 - Topic:** Positive Childhood Experiences, the HOPE Framework, & COVID-19
 - When:** June 16, 2020 from 1:00 PM – 2:30 PM PST
 - Registration Link:** <https://tinyurl.com/efc-hope-covid-19>



Contact Information

For more information or to connect with the facilitators, please see the below contact details:

- Elena Costa at elena.costa@cdph.ca.gov
California Essentials for Childhood (EfC) Initiative Program Coordinator
- Lucy Roberts at lroberts@lead4tomorrow.org
Equity Subcommittee Chair; Lead4Tomorrow
- Michael Williams at mwilliams@thecapcenter.org
Equity Subcommittee Chair; Strategies 2.0



Thank You!