

THE ECONOMICS OF CHILD ABUSE

2019 Study of Mendocino County

Child abuse is a persistent problem within Mendocino County and the entire state. Although it is a hidden social ill, its impact is significant. Child abuse impacts not just the child, but the family, the community, and society at large. While the impact of abuse not only morally devastates our community, it also significantly hurts our economy. In fact, the physical, mental, and emotional effects of abuse persist long after child abuse occurs, and result in ongoing costs to every sector of our community.

Child abuse is a core underlying factor to many of the ongoing struggles of this community, such as high rates of school dropout, homelessness, incarceration, and chronic health issues. This report shines a light on this largely ignored issue and the negative impact it has on all of us.

THE FINANCIAL IMPACT OF CHILD ABUSE

The cumulative financial impact to the Mendocino community for the 370 verified child victims in 2018 is \$87.1M. Though these costs are accrued over the course of the victim's life, the community will continue to incur the same cost each year until we are able to reduce and ultimately end child abuse.

Financial impact for verified cases last year:

Since child abuse is vastly underreported, in reality, the cost to the Mendocino community is likely far higher. Last year, there were:



370
VERIFIED
CHILD VICTIMS
OF ABUSE



1,904
REPORTED
CHILD VICTIMS
OF ABUSE



That's one child every 5 hours

2,197
ESTIMATED
CHILD VICTIMS
OF ABUSE

→ The resulting financial impact is as high as \$517.2M

This report was created in partnership with:

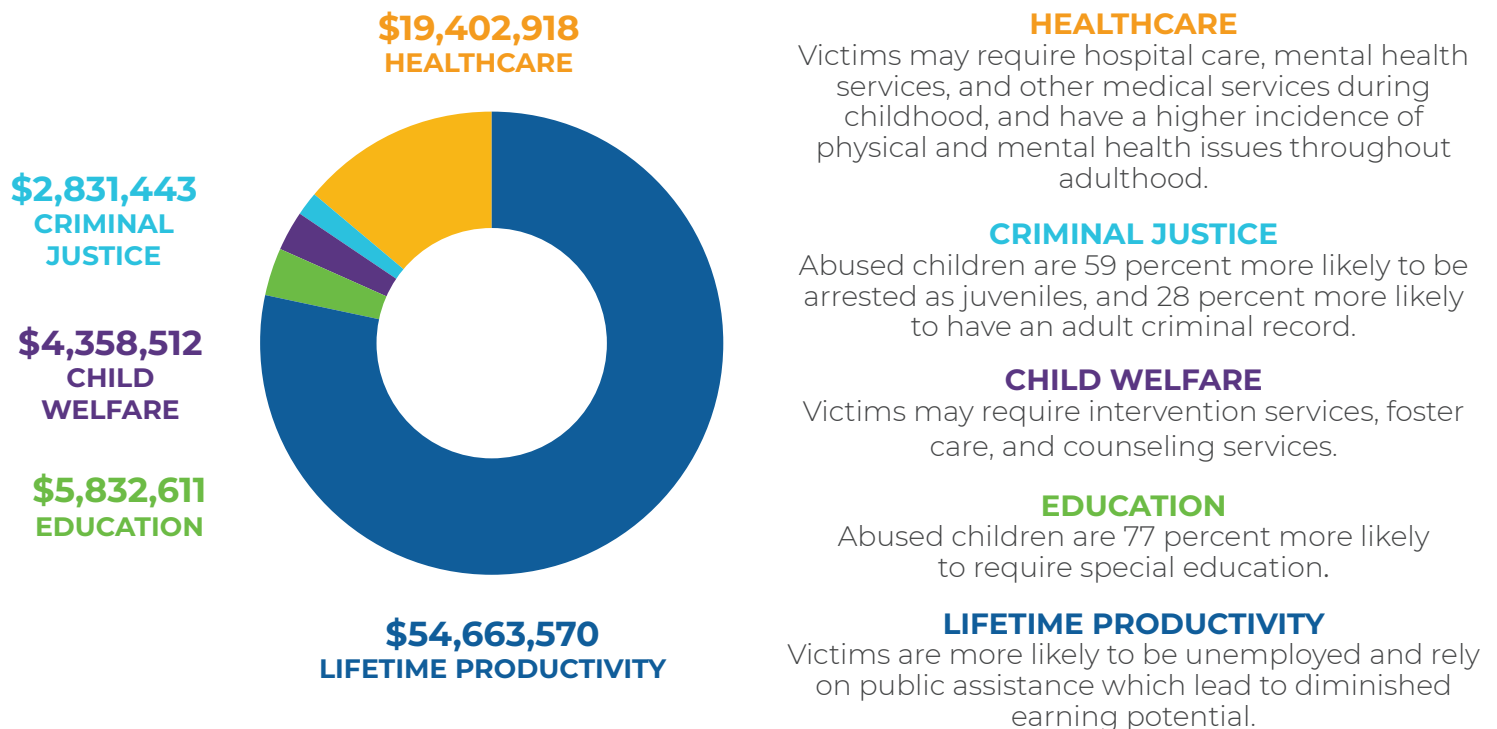


Strengthening Families.
Ending Child Abuse.



COST TO THE MENDOCINO COMMUNITY

A Breakdown of \$87.1M



CHILDHOOD TRAUMA ACTION TEAM

The Childhood Trauma Action Team is dedicated to preventing and reducing the number of Adverse Childhood Experiences (ACEs) in the Mendocino County region, creating opportunities to heal from past trauma and building **RESILIENT** Mendocino communities. mendocinokids.org

PROTECTIVE FACTORS

Communities can support vulnerable children and families by fostering the five protective factors. By helping families to enhance their protective factors, they will be better equipped to combat risk factors (history of abuse, isolation, substance abuse, and others) and prevent incidences of child abuse. Research shows that healthy and safe families share these five commonalities:

SOCIAL & EMOTIONAL COMPETENCE OF CHILDREN

Family and child interactions that help children develop the ability to communicate clearly, recognize and regulate their emotions, and establish and maintain relationships

KNOWLEDGE OF CHILD DEVELOPMENT

Understanding parenting strategies that support physical, cognitive, language, social, and emotional development

PARENTAL RESILIENCE

Managing stress and functioning well when faced with challenges, adversity, and trauma

SOCIAL CONNECTIONS

Positive relationships that provide emotional, informational, and spiritual support

CONCRETE SUPPORT

Access to concrete support and services that address a family's needs and help minimize stress caused by life's challenges

#CostOfChildAbuse

Thanks to Safe & Sound and UC Berkeley Haas School of Business for this calculation and for generous funding from Blue Shield of California Foundation, California Department of Social Services—Office of Child Abuse Prevention, Casey Family Programs, County Welfare Directors Association of California, S.H. Cowell Foundation, The Golden Door Foundation, The HAND Foundation, Conrad N. Hilton Foundation, and Zellerbach Family Foundation. To learn more, please visit <http://economics.safeandsound.org>