



Fostering Futures: FAQ's

What is Fostering Futures? The Fostering Futures Initiative integrates scientific evidence about Adverse Childhood Experiences (ACEs), trauma-informed care (TIC) and resiliency into community practices with a focus on Wisconsin's systems of care. Fostering Futures focuses on identifying and eradicating barriers to implementing TIC, offers strategies for effective implementation of TIC practices, and stimulates the creation of policies that advance TIC and subsequently improve the health and well-being of Wisconsin citizens. The overarching goal is to improve everyone's health and well-being by developing a statewide, interdisciplinary approach.

Fostering Futures partners with the following groups:

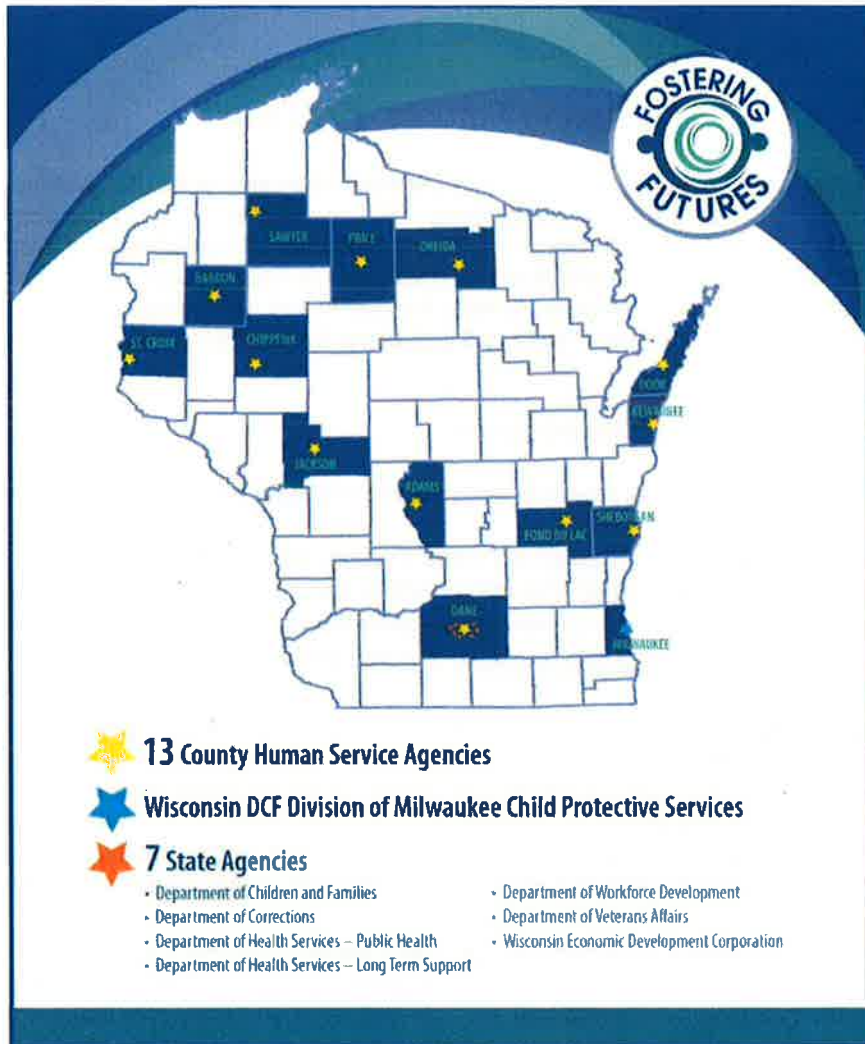
- [Casey Family Programs](#) supports logistical needs and provides a national context to the trauma-informed care movement
- [Healthier Wisconsin Partnership Program](#) provides funding and learning opportunities
- [National Council for Behavioral Health](#) (NCBH) provides training, tools and consultation
- [Wilder Research](#) conducts research on how the initiative changes organizations culture and practices
- [Wisconsin Department of Children and Families](#), Trauma Project

Why is Fostering Futures needed? Studies show that at least 60% of Wisconsinites report at least one Adverse Childhood Experience, with 14% reporting 4 or more.¹ The cumulative, negative impact of ACEs on our social, emotional and physical well-being has been well documented. Scientific studies link ACEs to increased smoking, substance abuse and suicide as well as life-threatening illnesses and some of the most common causes of death: heart disease, stroke, diabetes and cancer. In short, the widespread occurrence of ACEs in our communities makes it the leading public health challenge of our time.

What is required to participate? Participation starts with the organization's agreement to become part of the Fostering Futures Learning Community. Each participating organization creates a Core Implementation Team including 7-10 personnel, service recipients and executive leadership. The team meets regularly to develop, implement and track progress toward goals. Over the course of the project, teams complete a series of surveys to help track progress. Teams should plan to be together (virtually or in person) for coaching sessions and webinars. The professional development fee for participating in the Fostering Futures Trauma-Informed Care Learning Community is \$5,000 per year for 2 years. This fee includes the cost of training sessions, coaching and unlimited access to the NCBH resources. Teams should also plan for the travel costs of attending the 3 in-person meetings (a total of 4 days with lunches provided).

How can I find out more? You may contact Fostering Futures staff or designated liaisons to the Steering Committee for more information. Participants currently include 14 county agency teams and 7 state agencies. Feel free to reach out to your colleagues in any of the following counties or state agencies for a first-hand account. County teams include: Adams, Barron, Chippewa, Dane, Door, Fond du Lac, Jackson, Kewaunee, Milwaukee CPS, Oneida, Price, Sawyer, Sheboygan, and St. Croix. A map with county contact information can be found here: children.wi.gov. Current state agency teams include: Department of Children and Families, Department of Corrections, Department of Health Services, Department of Workforce Development, Department of Veterans Affairs, and Wisconsin Economic Development Corporation.

¹ <http://wichildrenstrustfund.org/Documents/REVISEDWisconsinACEs.August2012.pdf>



Fostering Futures Staff and Steering Committee Liaisons

www.fosteringfutureswisconsin.gov

Name	Role	Contact Info
Carol Howard	Director Fostering Futures	choward@fosteringfutureswisconsin.org 414-847-4510
Andrea Spagnoli	Coordinator Fostering Futures	aspagnoli@fosteringfutureswisconsin.org 414-442-1745
Fredi Ellen Bove	Steering Committee Member WI Department of Children and Families	FrediEllen.Bove@wisconsin.gov 608-422-6891
Elizabeth Hudson	Steering Committee Member WI Office of Children's Mental Health	Elizabeth.Hudson@wisconsin.gov 608-266-2771

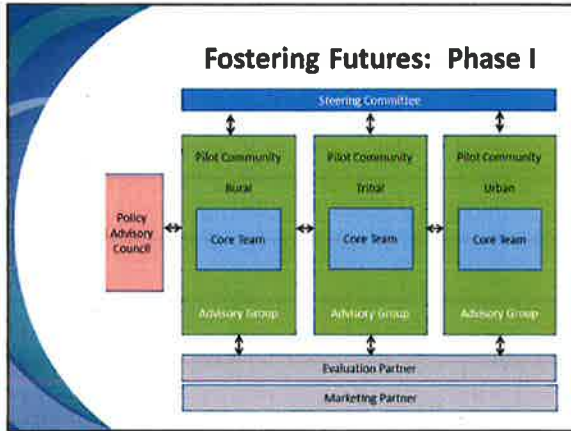


Fostering Futures was created to integrate the following into communities and Wisconsin state and county systems:

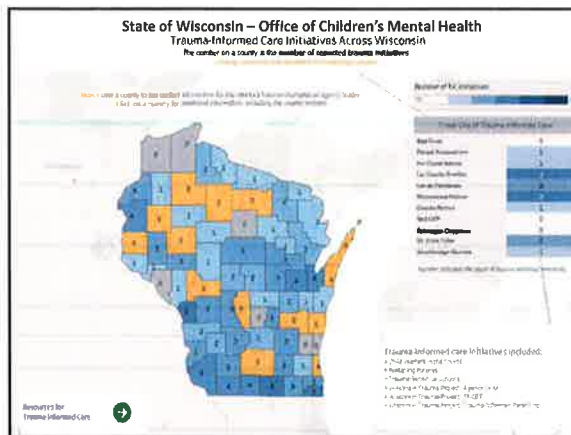
- scientific evidence about **Adverse Childhood Experiences (ACEs)**,
- **Trauma-Informed Care (TIC)** and
- **Resilience**

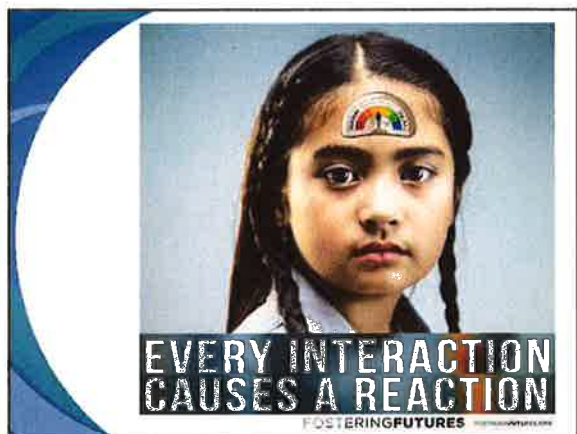
Mission Statement

Fostering Futures' vision is that all Wisconsin children and families are thriving in nurturing communities; individuals, communities and government integrate trauma-informed, strength-based principles into their relationships, culture, policies and practices, promoting safe, stable and nurturing relationships.









Contact Information

First Lady Tonette Walker
Contact: Stephanie Malchine, Executive Assistant
stephanie.malchine@wi.gov

Carol Howard
Director, Fostering Futures
choward@fosteringfutureswisconsin.org

Elizabeth Hudson
Director, Office of Children's Mental Health
Member, Fostering Futures Steering Committee
elizabeth.hudson@wi.gov
