

# ACES AND SOCIAL INSTITUTIONS



OUR PLURALISTIC SOCIETY (MANY SUPPORTING INSTITUTIONS)

**Social institutions** are a system of behavioral and relationship patterns that are densely interwoven and enduring, and function across an entire society. They order and structure the behavior of individuals by means of their normative character.

[Social Institutions in Encyclopedia of Quality of Life Research](https://www.soz.univie.ac.at/.../Social%20Institutions%20in%20Encyclopedia%20of%20Quality%20of%20Life...)

[https://www.soz.univie.ac.at/.../Social Institutions in Encyclopedia of Quality of Life ...](https://www.soz.univie.ac.at/.../Social%20Institutions%20in%20Encyclopedia%20of%20Quality%20of%20Life...)

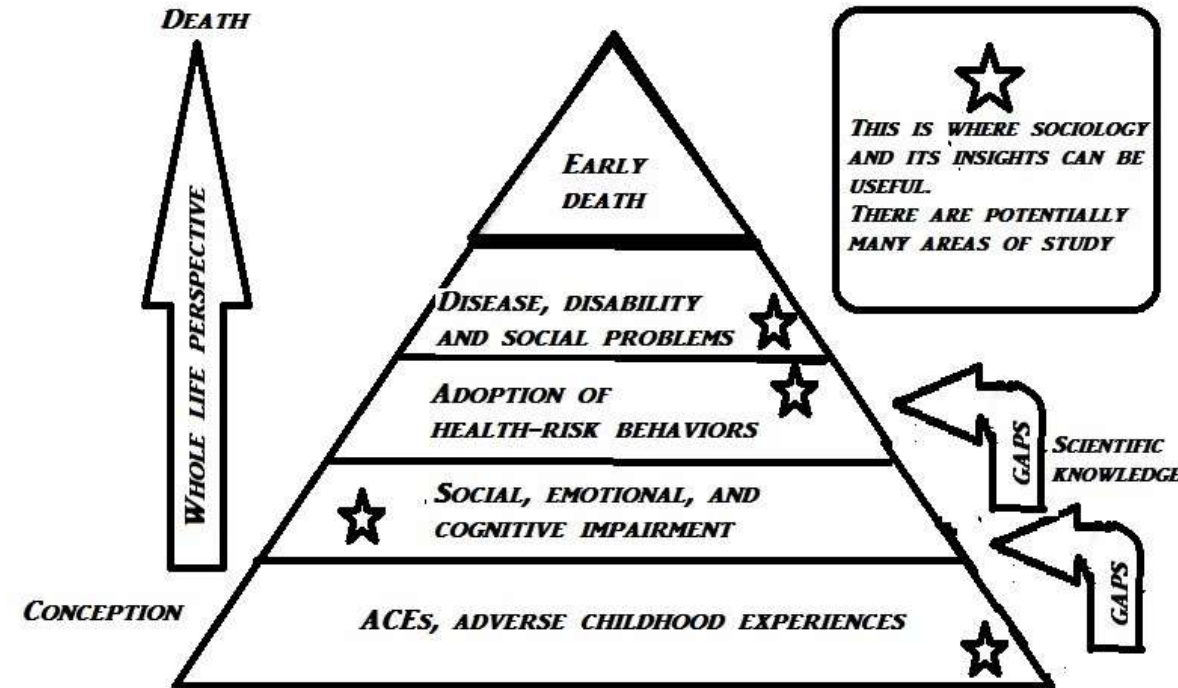
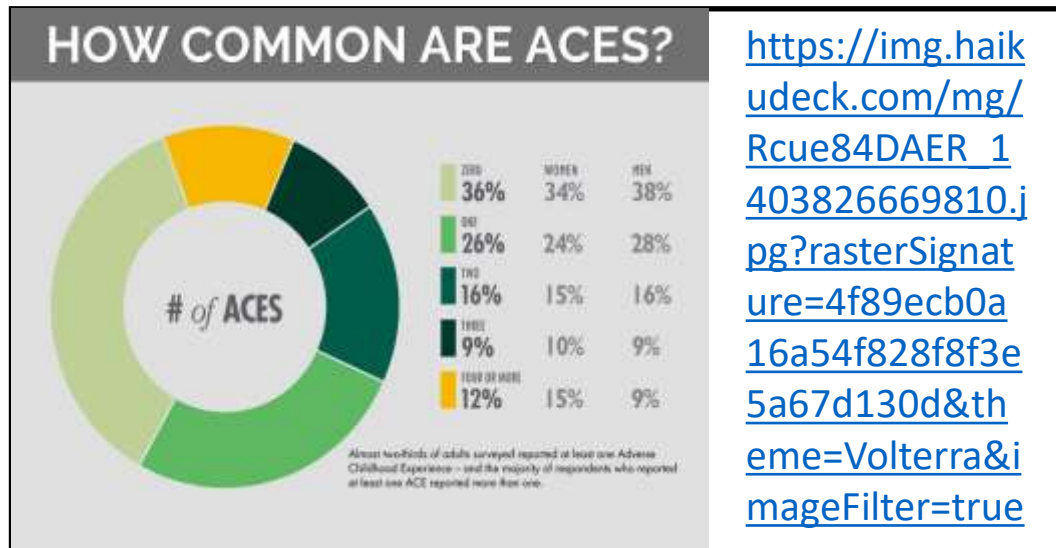
In this illustration many institutions are represented by pillars. These pillars link society and culture to the individual. The individuals are placed on top because ACE should be looked at as focusing on the individual.



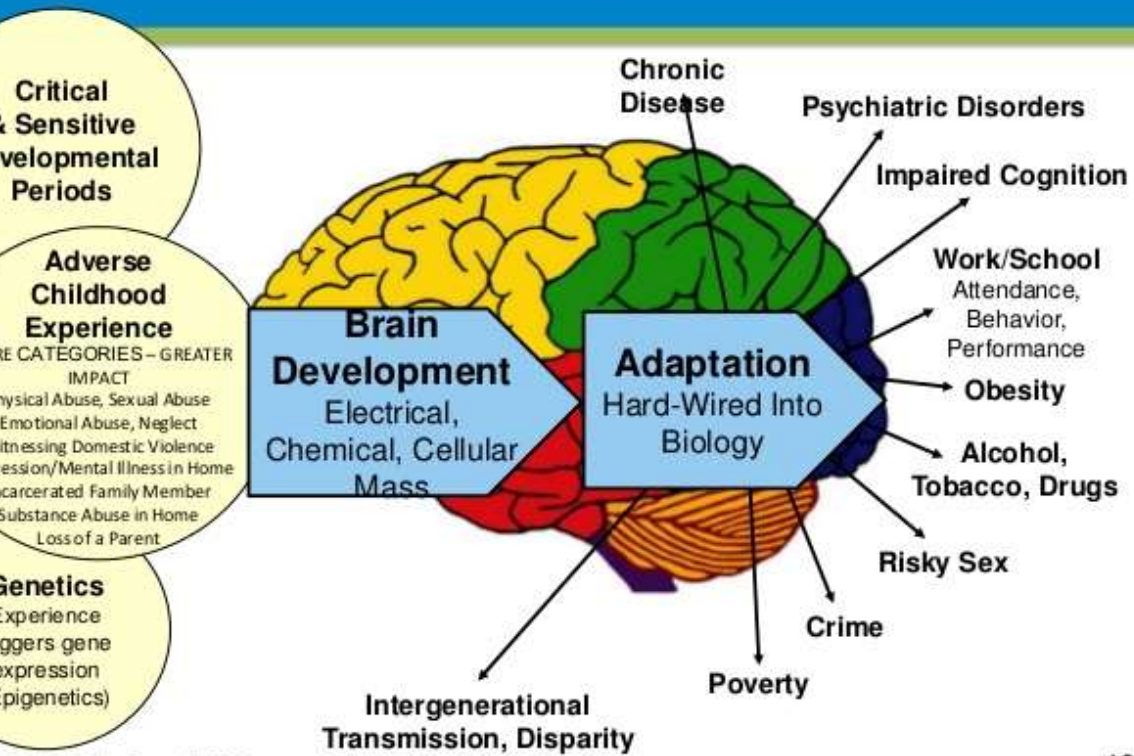
# An Adverse Childhood Experience

**(ACE)** describes a traumatic **experience** in a person's life occurring before the age of 18 that the person remembers as an adult.

[Definition - Adverse Childhood Experience \(ACE\) in Minnesota](http://www.health.state.mn.us/divs/cfh/program/ace/definition.cfm)  
[www.health.state.mn.us/divs/cfh/program/ace/definition.cfm](http://www.health.state.mn.us/divs/cfh/program/ace/definition.cfm)



# Lifespan Impacts of ACEs



Family Policy Council, 2012

10

<http://allergiesandyourgut.com/wp-content/uploads/2015/06/impact-of-aces-10-638.jpg>

*Individuals*

*individuals*      INDIVIDUALS  
INDIVIDUALS      **Individuals**      Individuals

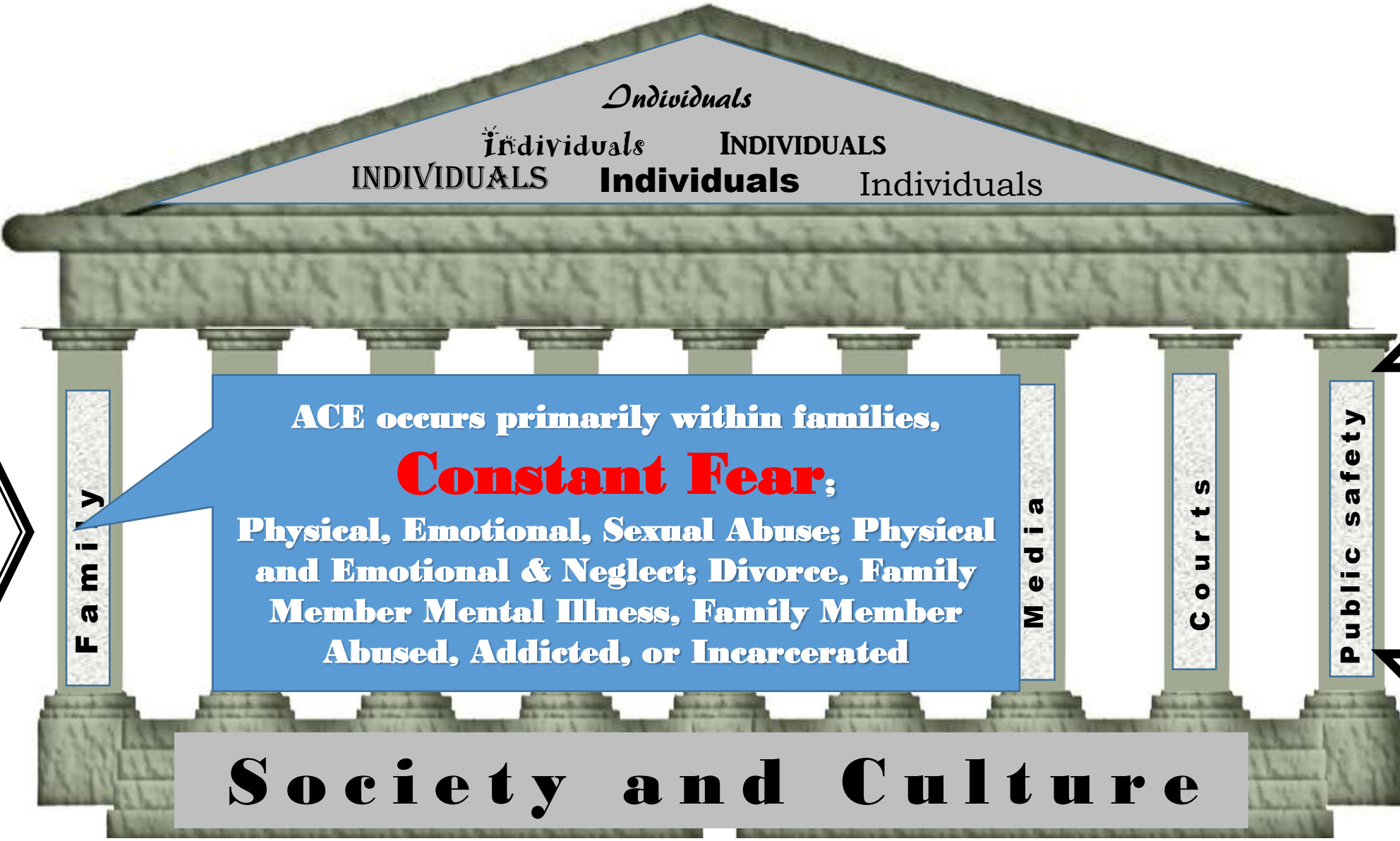
**ACE is not the only cause of dysfunction in our society. The prevalence of ACE amongst individuals varies. The effects of moderate ACE scores vary. The resiliency of individuals varies. However the effects of high ACE individuals upon the institutions of our society affects us all.**

**Society and Culture**

OUR PLURALISTIC SOCIETY (MANY SUPPORTING INSTITUTIONS)

Social and Cultural  
Institutions

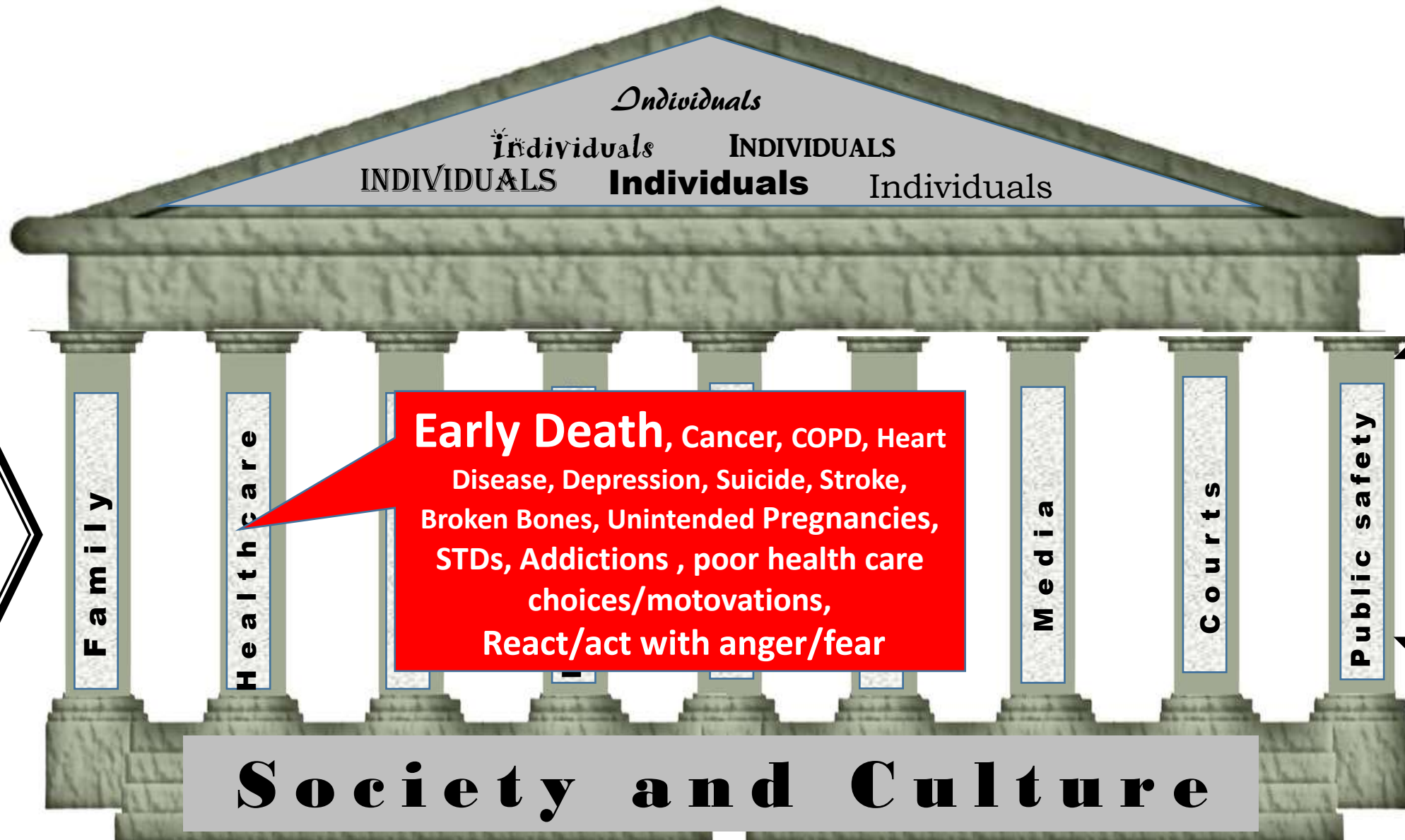
How society affects us  
and we affect society



Social and Cultural  
 Institutions

How society affects us  
 and we affect society

OUR PLURALISTIC SOCIETY (MANY SUPPORTING INSTITUTIONS)



Social and Cultural  
Institutions

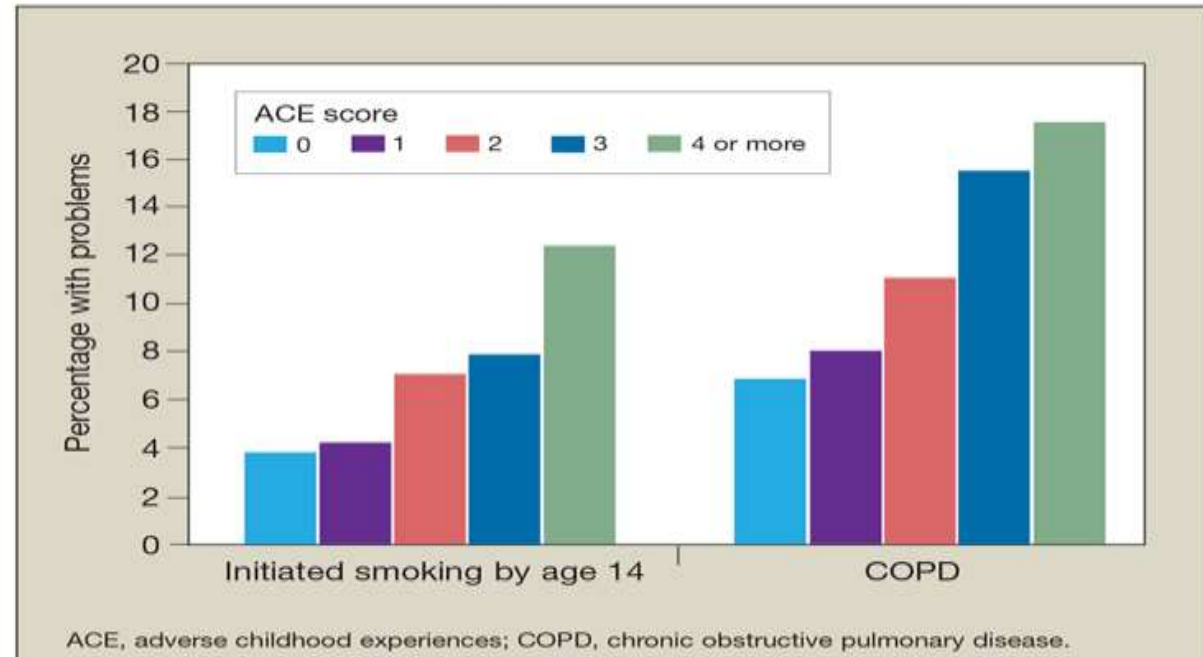
How society affects us  
and we affect society

OUR PLURALISTIC SOCIETY (MANY SUPPORTING INSTITUTIONS)

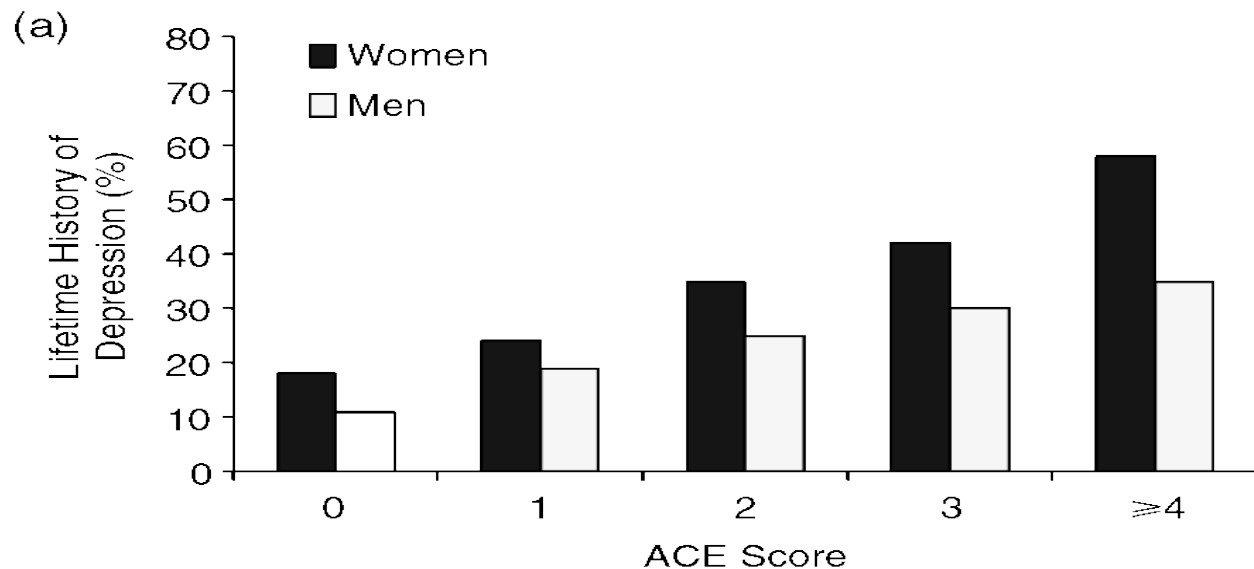
# ACE-related odds of having a physical health condition (in Iowa study). 100% means average chances.

Health Condition	0 ACEs	1 ACEs	2 ACEs	3 ACEs	4+ ACEs
Arthritis	100%	130%	145%	155%	236%
Asthma	100%	115%	118%	160%	231%
Cancer	100%	112%	101%	111%	157%
COPD	100%	120%	161%	220%	399%
Diabetes	100%	128%	132%	115%	201%
Heart Attack	100%	148%	144%	287%	232%
Heart Disease	100%	123%	149%	250%	285%
Kidney Disease	100%	83%	164%	179%	263%
Stroke	100%	114%	117%	180%	281%
Vision	100%	167%	181%	199%	354%

<http://acestoohigh.files.wordpress.com/2013/10/iowahealthcon.png>



[http://www.psychiatrictimes.com/sites/default/files/figures\\_diagrams/1408PT\\_Hinch\\_F3.png](http://www.psychiatrictimes.com/sites/default/files/figures_diagrams/1408PT_Hinch_F3.png)



[https://static.cambridge.org/resource/id/urn:cambridge.org:id:binary:10356:20160707100526563-0595:88026fig8\\_1a.gif?pub-status=live](https://static.cambridge.org/resource/id/urn:cambridge.org:id:binary:10356:20160707100526563-0595:88026fig8_1a.gif?pub-status=live)



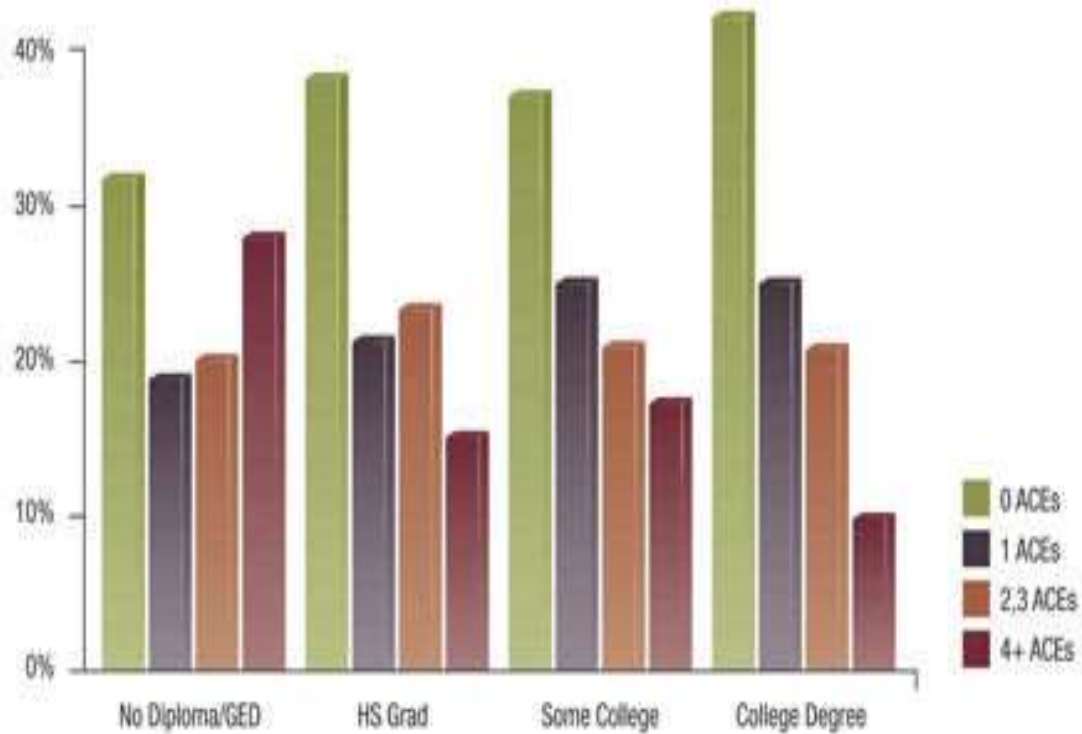


OUR PLURALISTIC SOCIETY (MANY SUPPORTING INSTITUTIONS)



OUR PLURALISTIC SOCIETY (MANY SUPPORTING INSTITUTIONS)

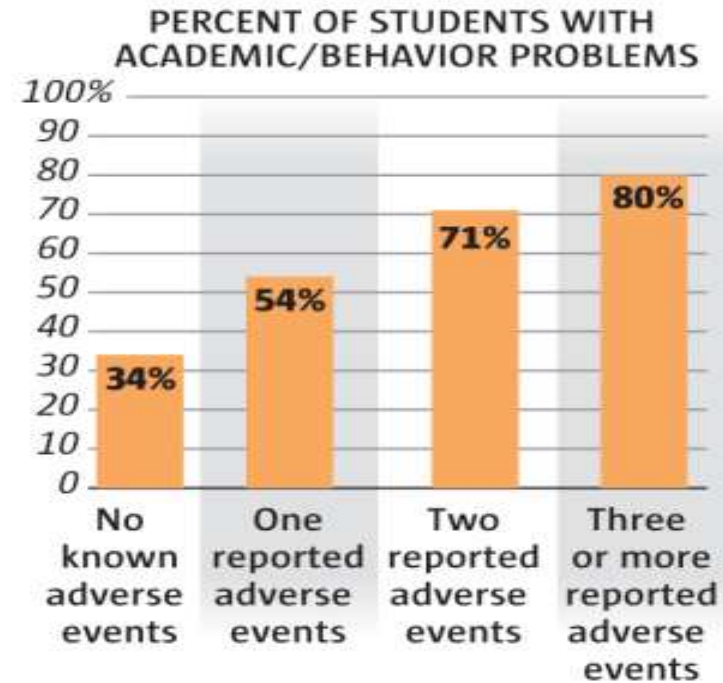
# ACEs and Educational Attainment



<http://bloximages.chicago2.vip.townnews.com/apg-wi.com/content/tncms/assets/v3/editorial/a/ea/aea2b590-e8ec-11e6-b8dc-d77d20a4e941/58929552a9999.image.jpg>

## When ACEs rise, academics fall

A study of 2,100 elementary schoolchildren in Spokane makes clear the relationship between Adverse Childhood Experiences and problems in school.



Source: Washington State University Area Health Project

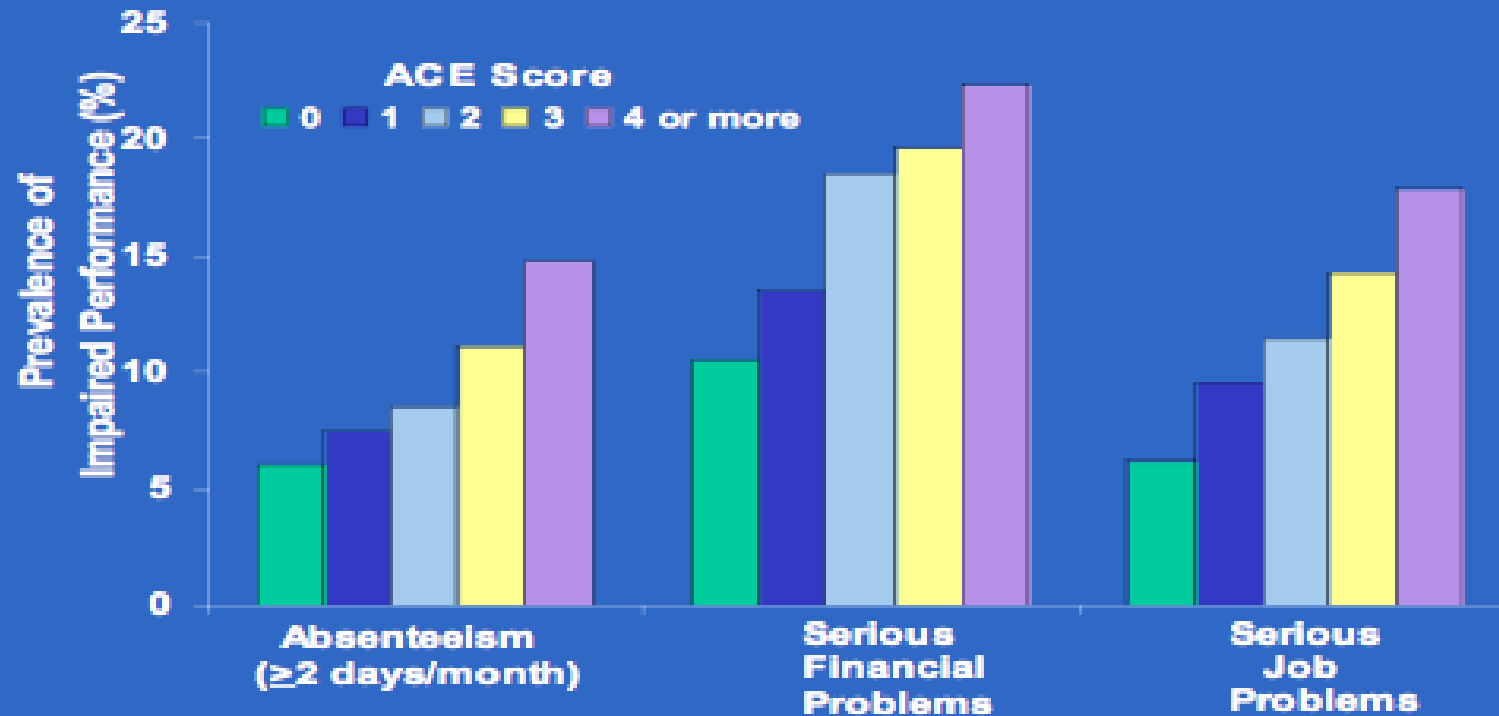
MARK NOWLIN / THE SEATTLE TIMES

[http://static.wixstatic.com/media/29cec4\\_8d6ba5dd64f645cf9a36e13c5bf81767.jpg](http://static.wixstatic.com/media/29cec4_8d6ba5dd64f645cf9a36e13c5bf81767.jpg)



OUR PLURALISTIC SOCIETY (MANY SUPPORTING INSTITUTIONS)

## ACE Score and Indicators of Impaired Worker Performance



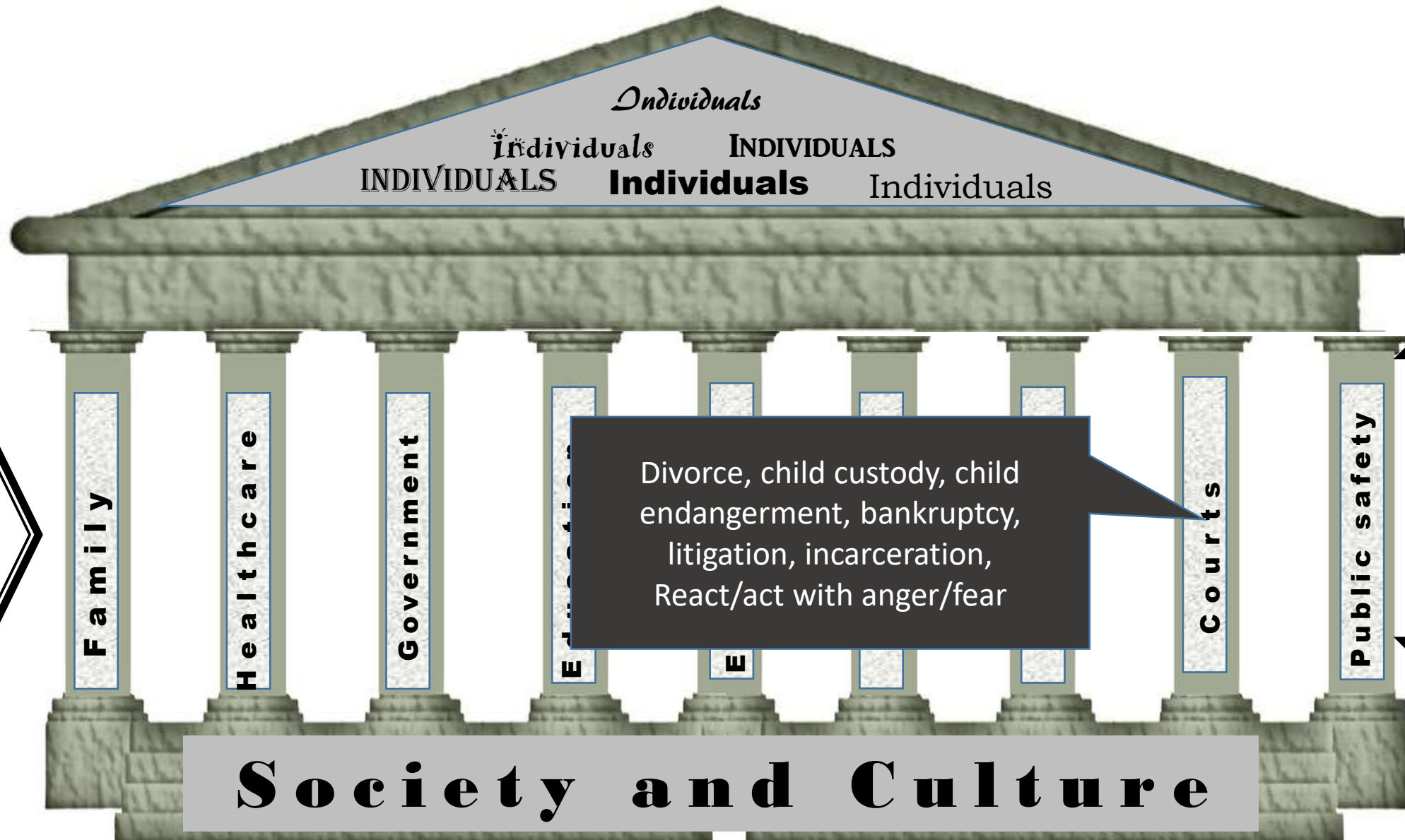
<https://acestoohigh.files.wordpress.com/2012/08/acework1.png>



OUR PLURALISTIC SOCIETY (MANY SUPPORTING INSTITUTIONS)



OUR PLURALISTIC SOCIETY (MANY SUPPORTING INSTITUTIONS)

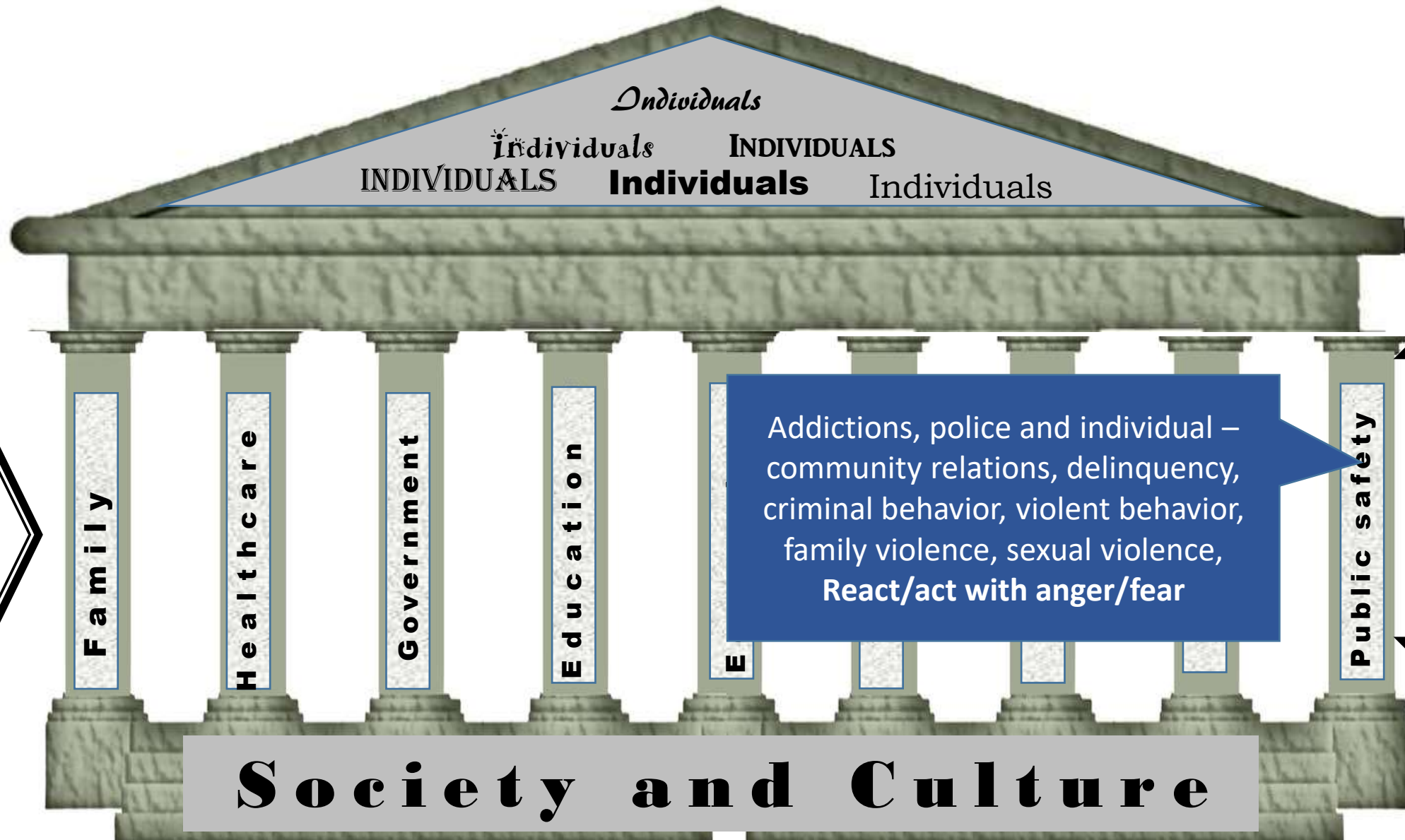


Social and Cultural Institutions

How society affects us and we affect society

OUR PLURALISTIC SOCIETY (MANY SUPPORTING INSTITUTIONS)



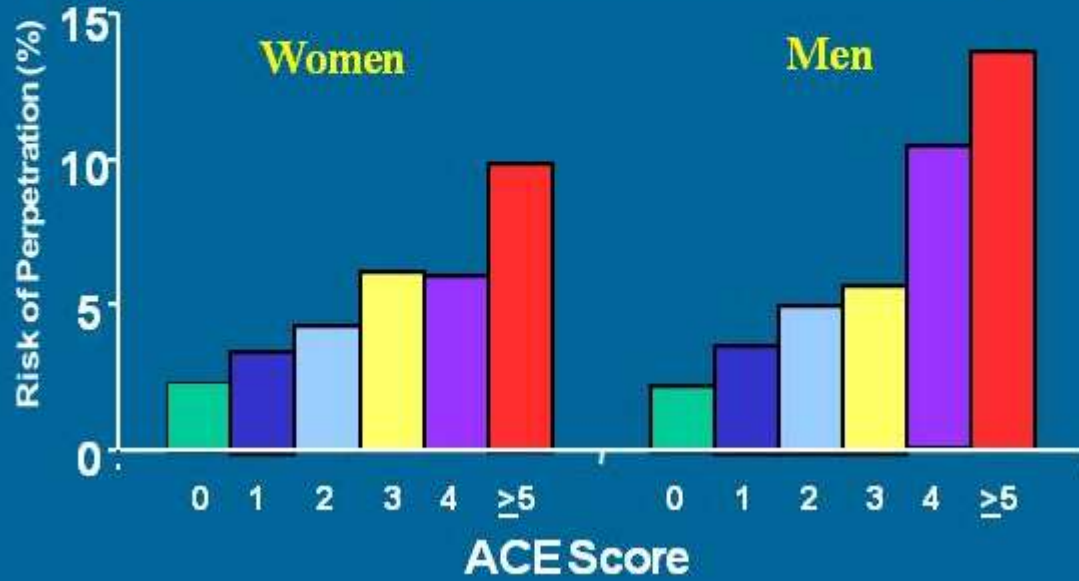


Social and Cultural  
Institutions

How society affects us  
and we affect society

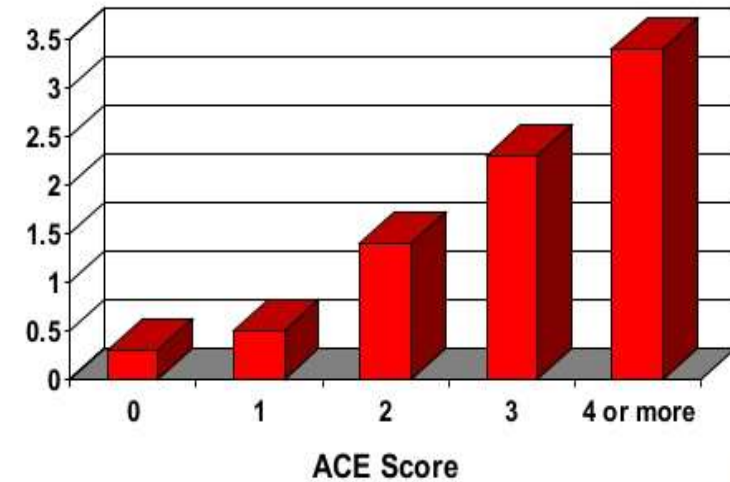
OUR PLURALISTIC SOCIETY (MANY SUPPORTING INSTITUTIONS)

## ACE Score and the Risk of *Perpetrating* Domestic Violence



<https://acestoohigh.files.wordpress.com/2011/11/acedodv.png>

## ACE Score vs. Intravenous Drug Use



<https://image.slidesharecdn.com/acetrainthetrainer-finaljune42013-130903171159-/95/ace-train-the-trainer-presentation-66-638.jpg?cb=1378228500>



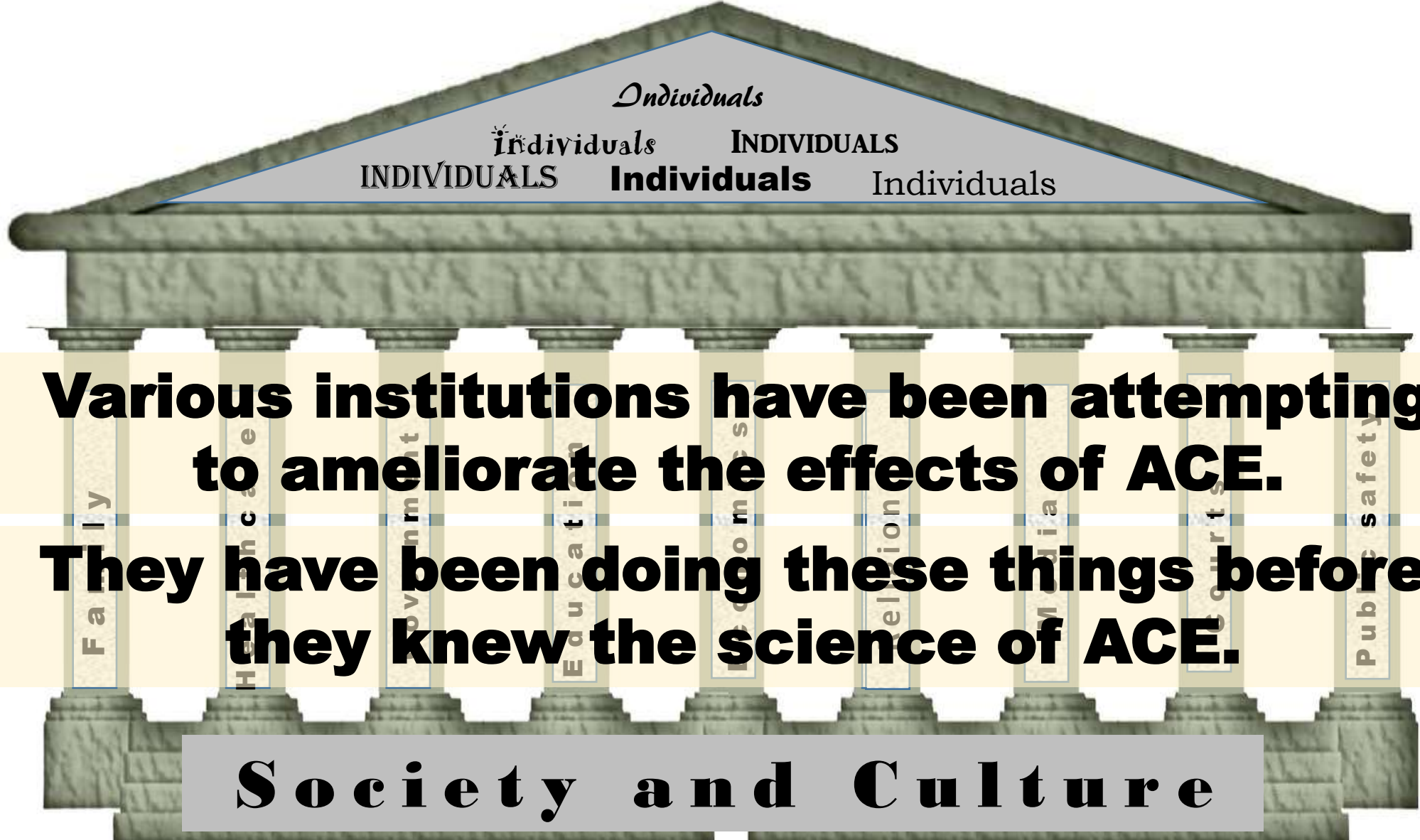
Social and Cultural Institutions

How society affects us and we affect society

**ALL INSTITUTIONS ARE AFFECTED BY ACE**

**Society and Culture**

OUR PLURALISTIC SOCIETY (MANY SUPPORTING INSTITUTIONS)



*Individuals*

*Individuals*      INDIVIDUALS  
INDIVIDUALS      **Individuals**      Individuals

**Various institutions have been attempting to ameliorate the effects of ACE.**

**They have been doing these things before they knew the science of ACE.**

**Society and Culture**

OUR PLURALISTIC SOCIETY (MANY SUPPORTING INSTITUTIONS)

# PROMISING FUTURES

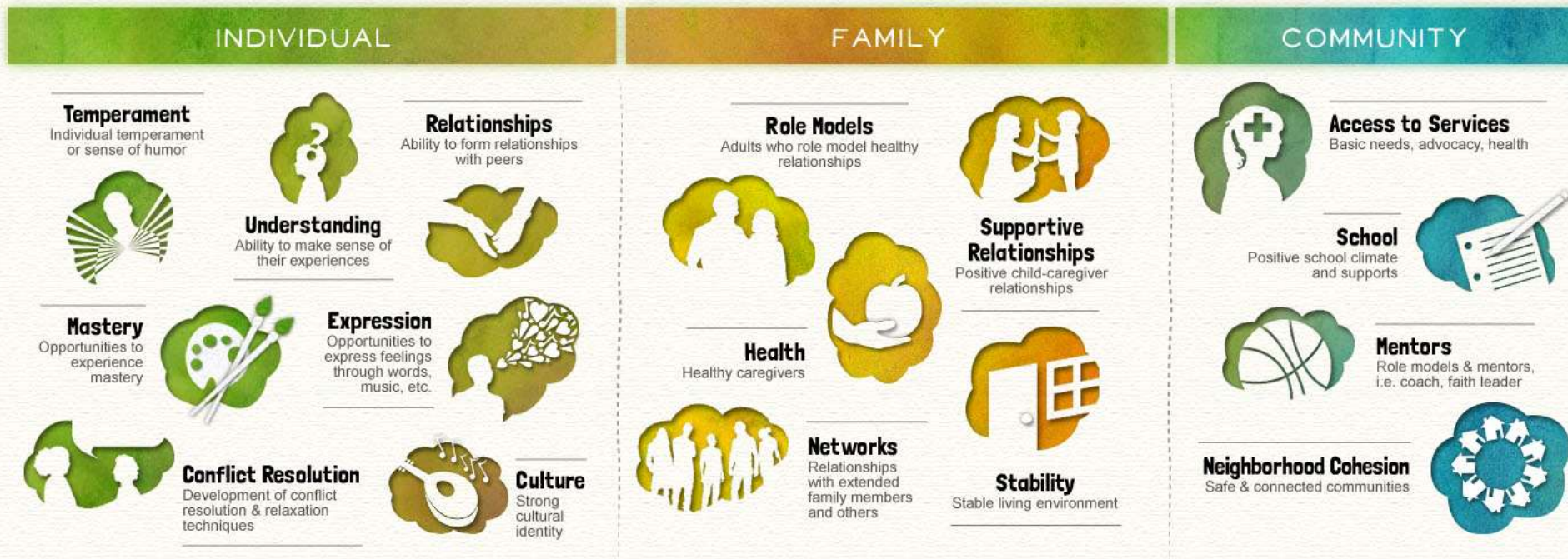
## PROMOTING RESILIENCY

among children and youth experiencing domestic violence

Almost 30 million American children will be exposed to family violence by the time they are 17 years old.<sup>[2]</sup> Kids who are exposed to violence are affected in different ways and not all are traumatized or permanently harmed. Protective factors can promote resiliency, help children and youth heal, and support prevention efforts.

Research indicates that the #1 protective factor in helping children heal from the experience is the presence of a consistent, supportive, and loving adult—most often their mother.<sup>[1]</sup>

### PROTECTIVE FACTORS THAT PROMOTE RESILIENCY



Get started at [www.PromisingFuturesWithoutViolence.org](http://www.PromisingFuturesWithoutViolence.org)  
 National Domestic Violence Hotline: 1-800-799-7233 (SAFE)  
 National Dating Abuse Helpline: 1-866-331-9474 or text "loveis" to 77054

*Promising Futures: Best Practices for Serving Children, Youth & Parents is a project of Futures Without Violence*

**FUTURES**  
WITHOUT VIOLENCE™

Formerly Family Violence Prevention Fund

© Dennis Haffron

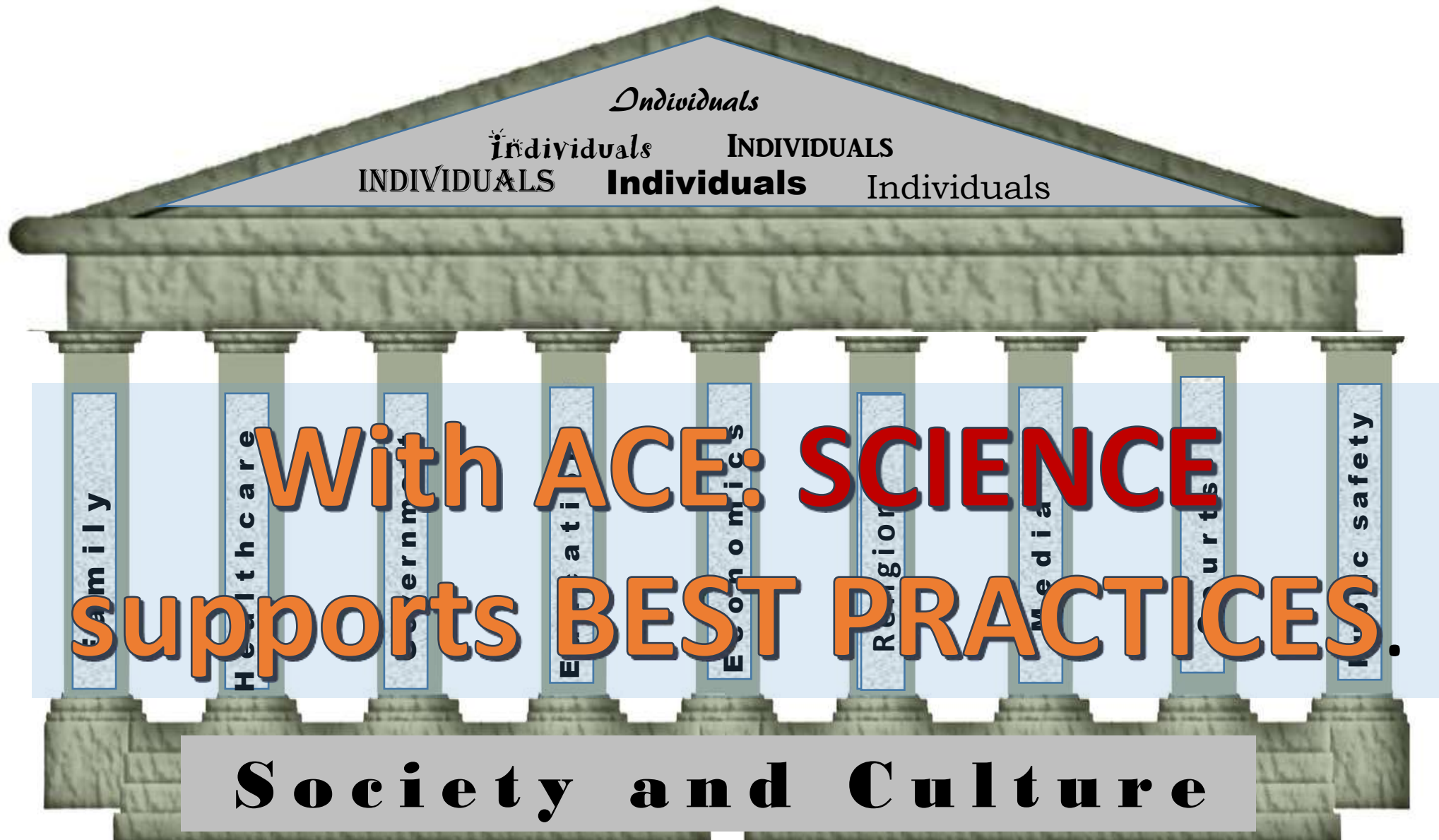
<http://promising.futureswithoutviolence.org/files/2014/01/Promising-Futures-Infographic-FINAL.jpg>



**Understanding the science of ACE will help to: promote, define, refine, and discover the “BEST PRACTICES” for dealing with individuals in many of our social institutions.**

**Society and Culture**

OUR PLURALISTIC SOCIETY (MANY SUPPORTING INSTITUTIONS)



*Individuals*

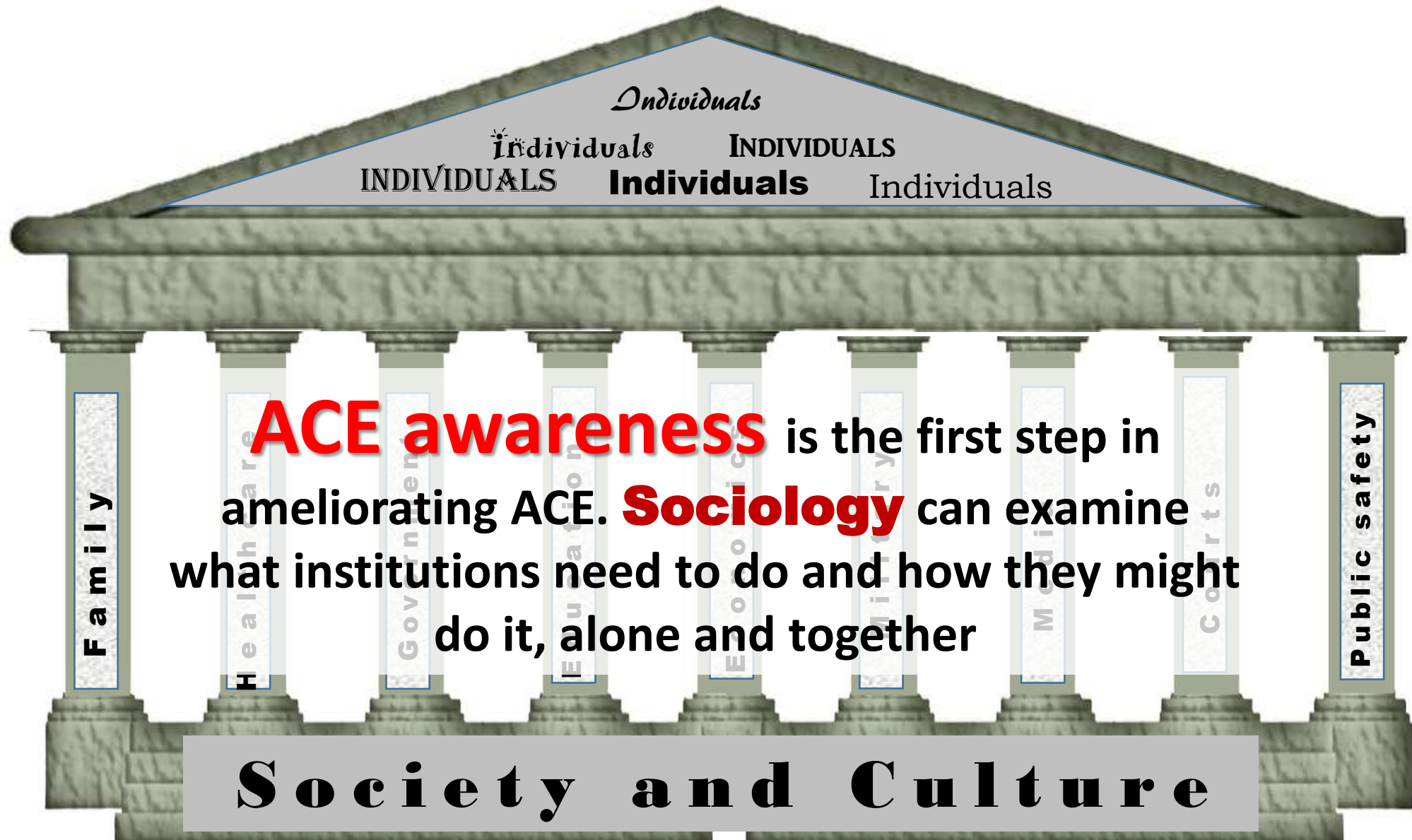
*Individuals*    INDIVIDUALS  
INDIVIDUALS    **Individuals**    Individuals

Family    Healthcare    Government    Education    Economics    Religion    Media    Courts    Public safety

**With ACE: SCIENCE**  
**supports BEST PRACTICES.**

**Society and Culture**

OUR PLURALISTIC SOCIETY (MANY SUPPORTING INSTITUTIONS)



**ACE awareness** is the first step in ameliorating ACE. **Sociology** can examine what institutions need to do and how they might do it, alone and together

**Society and Culture**

OUR PLURALISTIC SOCIETY (MANY SUPPORTING INSTITUTIONS)



# The Pair of ACEs

## Adverse Childhood Experiences

Maternal Depression

Physical & Emotional Neglect

Emotional & Sexual Abuse

Divorce

Substance Abuse

Mental Illness

Domestic Violence

Incarceration

Homelessness

## Adverse Community Environments

Poverty

Violence

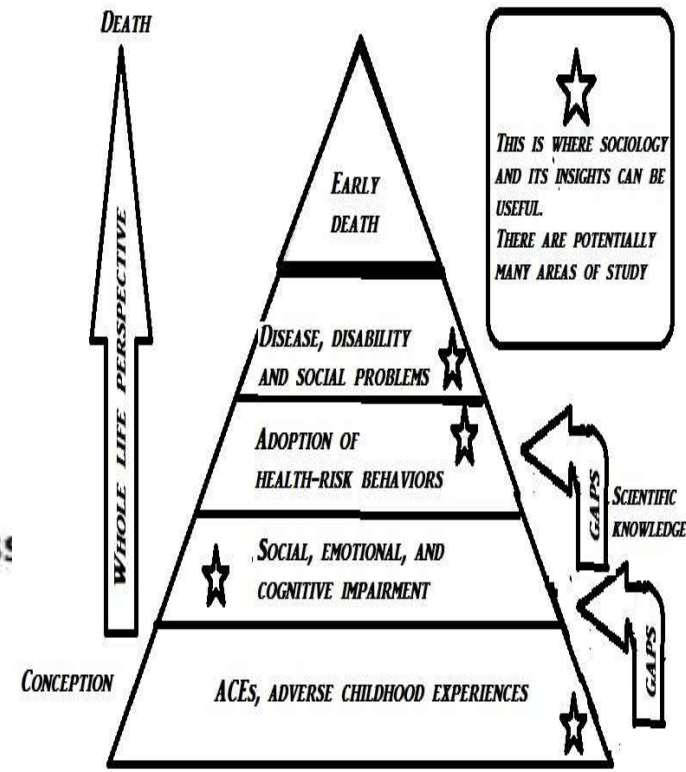
Discrimination

Poor Housing Quality & Affordability

Community Disruption

Lack of Opportunity, Economic Mobility & Social Capital

Ellis W. & Dietz W. BCR Framework. *Academic Peds* (2017).



Derived from: <https://acestohigh.files.wordpress.com/2012/10/ACEpyramid2.png>



OUR PLURALISTIC SOCIETY (MANY SUPPORTING INSTITUTIONS)