

WHAT **YOU** CAN DO TO Create

CULTURALLY RELEVANT CLASSROOMS

Greet

Greet students at the door at the beginning and end of each day.



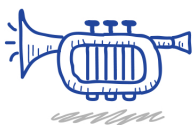
Identify

Have students identify themselves each time that they speak.



Be Transparent

Avoid hidden agendas. Share your truth.



Recognize

Recognize that you might carry stereotypes and preconceived notions about students based on their perceived identity.



Guide

Guide students to reflect upon and question situations using multiple lenses/perspectives rather than relying on a single story.



Show

Use storytelling to illustrate your point.



Involve

Use call and response to get the attention of the class.



Be Fair

Do not make generalizations about a group (by race, gender, religion, etc.). Avoid comments like, "All men....," "All women....," or "We all...."



Build

Build community through collaborative work.



Chant

Include choral chants to help lock information in memory.



Nurture

Create a safe learning environment (by doing *all* of the items on this list).



Address

As you are initially greeting students at the door, engage them in conversation about where they are from, and later, about issues important to them. Use these cultural referents throughout your daily lessons. Use students' names and avoid creating nicknames if you are unable to initially pronounce their name.



Look

Encourage students to look at peers in the room while speaking, as opposed to just the teacher.



Gather

Use inquiry effectively to gather more information about the needs of your students, so you can accurately meet their needs.



Include

Do not assume that your references will be understood by everyone (e.g., saying, "The igneous rock in question was bigger than a tennis ball" assumes that everyone knows how big a tennis ball is, when that may not be the case).



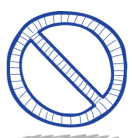
Diversify

Reference texts by a variety of authors (for different ethnicities, genders, etc.).



Avoid

Avoid sarcasm, as it will offend some.



Share

Share your story in order to build relational capacity.



Move

Use movement throughout activities—it helps cement memory.



Understand

Know that biology, family, community, culture, and generation all contribute to a person's tapestry.



Remember

Remember, you cannot *not* communicate. Every behavior is a kind of communication.

