

CDC Vitalsigns™

Adverse Childhood Experiences (ACEs) Preventing early trauma to improve adult health



Want to learn more?
www.cdc.gov/vitalsigns/aces

1 in 6

1 in 6 adults experienced four or more types of ACEs.

5 of 10

At least 5 of the top 10 leading causes of death are associated with ACEs.

44%

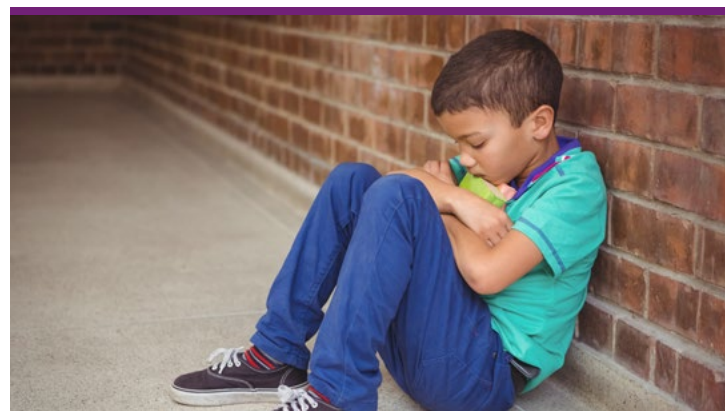
Preventing ACEs could reduce the number of adults with depression by as much as 44%.

Overview:

Adverse Childhood Experiences (ACEs) are potentially traumatic events that occur in childhood. ACEs can include violence, abuse, and growing up in a family with mental health or substance use problems. Toxic stress from ACEs can change brain development and affect how the body responds to stress. ACEs are linked to chronic health problems, mental illness, and substance misuse in adulthood. However, ACEs can be prevented.

Preventing ACEs can help children and adults thrive and potentially:

- Lower risk for conditions like depression, asthma, cancer, and diabetes in adulthood.
- Reduce risky behaviors like smoking, and heavy drinking.
- Improve education and job potential.
- Stop ACEs from being passed from one generation to the next.



PROBLEM:

Adverse Childhood Experiences impact lifelong health and opportunities.

ACEs are common and the effects can add up over time.

- 61% of adults had at least one ACE and 16% had 4 or more types of ACEs.
- Females and several racial/ethnic minority groups were at greater risk for experiencing 4 or more ACEs.
- Many people do not realize that exposure to ACEs is associated with increased risk for health problems across the lifespan.



Centers for Disease Control and Prevention
National Center for Injury Prevention and Control

Preventing ACEs could reduce a large number of health conditions.



UP TO

21 MILLION
CASES OF
DEPRESSION



UP TO

1.9 MILLION
CASES OF
HEART DISEASE

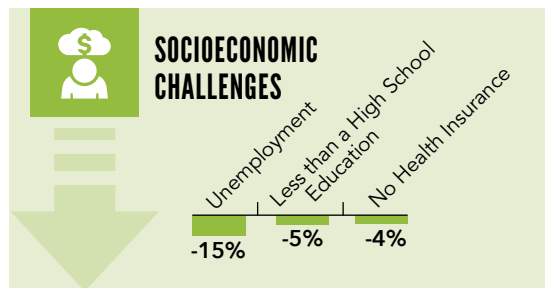
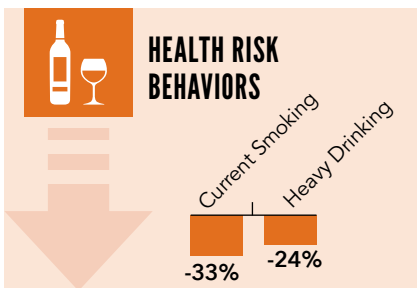
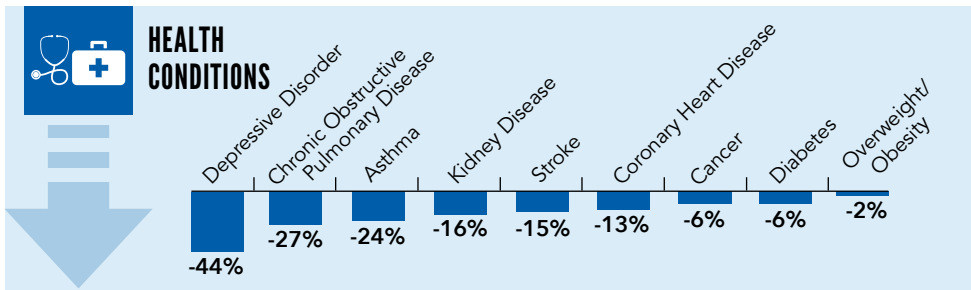


UP TO

2.5 MILLION
CASES OF
OVERWEIGHT/OBESITY

SOURCE: National Estimates based on 2017 BRFSS; Vital Signs, MMWR November 2019.

Potential reduction of negative outcomes in adulthood



SOURCE: BRFSS 2015-2017, 25 states, CDC Vital Signs, November 2019.



Raising awareness about ACEs can help:

- Change how people think about the causes of ACEs and who could help prevent them.
- Shift the focus from individual responsibility to community solutions.
- Reduce stigma around seeking help with parenting challenges or for substance misuse, depression, or suicidal thoughts.
- Promote safe, stable, nurturing relationships and environments where children live, learn, and play.

THE WAY FORWARD >>>

HEALTHCARE PROVIDERS CAN:

- Anticipate and recognize current risk for ACEs in children and history of ACEs in adults. Refer patients to effective services and support.
- Link adults to family-centered treatment approaches that include substance abuse treatment and parenting interventions.

EMPLOYERS CAN:

- Adopt and support family-friendly policies, such as paid family leave and flexible work schedules.

STATES AND COMMUNITIES CAN:

- Improve access to high-quality childcare by expanding eligibility, activities offered, and family involvement.
- Use effective social and economic supports that address financial hardship and other conditions that put families at risk for ACEs.
- Enhance connections to caring adults and increase parents' and youth skills to manage emotions and conflicts using approaches in schools and other settings.

EVERYONE CAN:

- Recognize challenges that families face and offer support and encouragement to reduce stress.
- Support community programs and policies that provide safe and healthy conditions for all children and families.

<http://go.usa.gov/xVvqD>

For more information

1-800-CDC-INFO (232-4636)

TTY: 1-888-232-6348 | Web: www.cdc.gov

Centers for Disease Control and Prevention

1600 Clifton Road NE, Atlanta, GA 30333

Publication date: November 5, 2019 CS310418