

TACHC

Texas Association of Community Health Centers

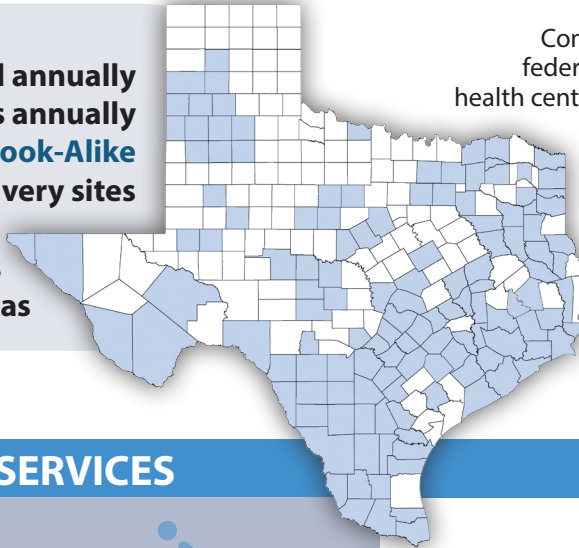
Texas Health Centers*



1.6 million patients served annually
6 million patient visits annually
72 FQHCs and 1 FQHC Look-Alike
Over 570 service delivery sites
Located in 133 counties



across
Texas



Community health centers (also known as federally qualified health centers, FQHCs, or health centers) provide **high-quality, affordable, primary and preventive health care services** to people who otherwise may lack access to medical care due to where they live, lack of insurance, language barriers, income level or their complex health care needs. At least 51% of all health center governing boards must be made up of patients.

COMPREHENSIVE SERVICES

MEDICAL	BEHAVIORAL HEALTH
DENTAL	SUBSTANCE USE DISORDER (SUD)
VISION	PHARMACY

Percentage of centers offering:

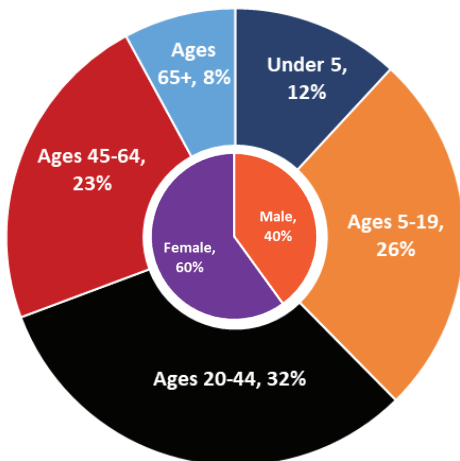


- ▶ SUD services ↻49%
- ▶ Behavioral Health services ↻96%
- ▶ Oral health services ↻92%

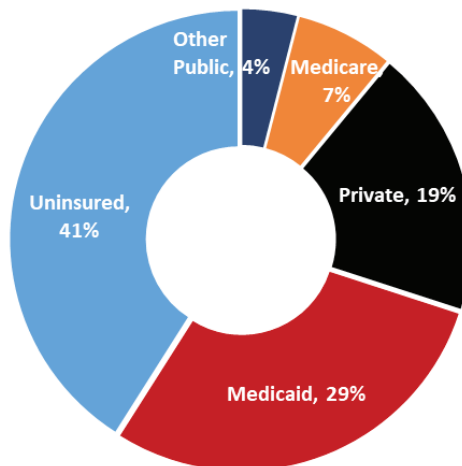
Texas Health Center Patients

Health centers maintain an open-door policy, ensuring everyone receives care regardless of financial status. For patients without insurance who self-pay, health centers use sliding scale fees based on patient income.

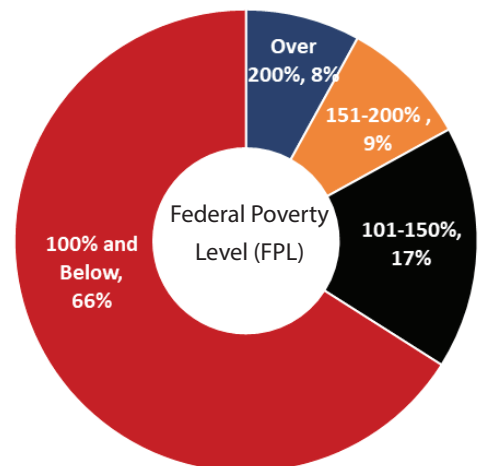
PATIENT AGE & GENDER



PATIENT INSURANCE

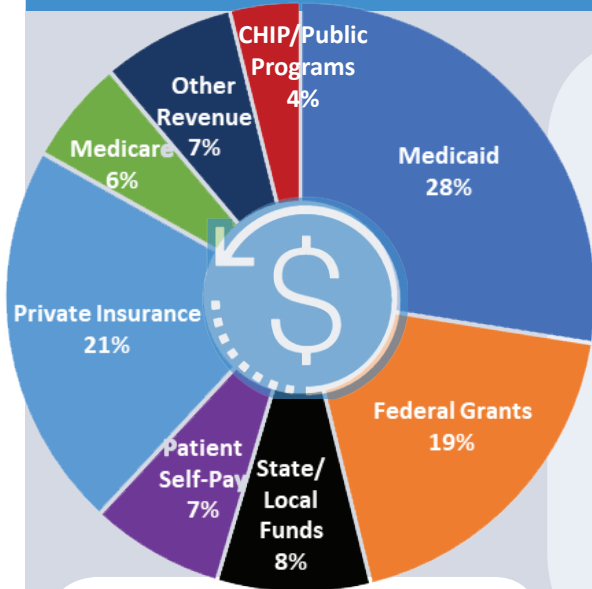


PATIENT INCOME**



* 2019 UDS data includes statistics for all the recognized FQHCs and FQHC look-alikes in 2019.
** Estimated

HEALTH CENTERS: A STRONG COMMUNITY INVESTMENT



Texas Health centers serve **11.7%** of the Medicaid population in the state and comprises only **0.65%** of the TX Medicaid budget.

Health centers are a driving economic force in their communities, **adding over \$2.3 billion annually*** to the Texas economy, employing **11,850** staff and generating **16,107** jobs.

Revenue Sources

Health center revenue comes from a variety of sources. Medicaid dollars represent the largest source, accounting for **28%** of total health center funds. Health centers also receive **19%** of their revenue from federal grants used primarily to fund care for the uninsured. State and local funding comprise **8%** of health center revenue. Patient self-pay revenues account for **7%** of total health center income.

Economical Care

Health centers provide preventive care and assist patients to effectively manage chronic conditions such as hypertension and diabetes. Research shows that effective preventive care and chronic disease management reduces the need for more costly hospital emergency room care, saving the healthcare system \$24 billion every year. *Source: IMPLAN 2018 Data and Health Center Audits

Community Health Centers: Caring for Texas Families

Average Annual Cost of Caring for Patients

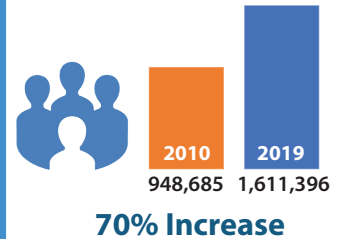
- ➔ Medical \$602
- ➔ Dental \$531
- ➔ Behavioral Health \$690



New FQHC Sites



Patient Growth



EXPANDING A QUALITY WORKFORCE

Texas health centers depend upon a primary care workforce of **7,500** integrated and multidisciplinary clinical care staff members to provide high quality, patient-centered care that is comprehensive, accessible and affordable. Health centers are building the infrastructure that supports coordinated care, continuity of care and quality improvement in order to enhance access to primary care while improving patient health outcomes.

Texas Health Centers by Numbers

- 75%** Nationally recognized with **Patient Centered Medical Home certification (PCMH)**
- 27%** Integrating principles and practices of **Trauma Informed Care (TIC)**
- 45%** Participating in **Project ECHO®** to enhance skill building and workforce development
- 99%** Providing **virtual (telehealth) services**

Texas Health Centers Clinical Care Staff

- 716 Physicians**
- 36 Vision Care Providers**
- 710 Nurse Practitioners/Physician Assistants/Certified Nurse Midwives**
- 330 Pharmacy Personnel**
- 313 Dentists/Dental Hygienists**
- 1,181 Clinical Support Staff**
- 561 Mental Health/Substance Abuse Providers**
- 3,707 Other Medical/Dental Personnel**

Texas Association of Community Health Centers

5900 Southwest Parkway, Building 3 | Austin, Texas 78735 | (512) 329-5959 | www.tachc.org | [/TexasCHCs](https://www.facebook.com/TexasCHCs) | [@TexasCHCs](https://twitter.com/TexasCHCs)